



Rochester Joint Schools Construction Board Fiscal Year 2017-18 Annual Report

Allen Williams, Chairman
Charles Benincasa, Treasurer
Ineabelle G. Cruz
Thomas Richards

Michael Schmidt, Vice Chairman
Bob Brown
Norman Jones
Brian Sanvidge, ICO



Rochester Schools Modernization Program

Table of Contents

Executive Summary.....4

Our Team.....5

RJSCB- General Information.....6

Program Highlights.....7

Phase II Projects.....8

Program Overview.....9

Community Engagement.....15

Phase II Updates & Summaries.....16

RSMP Timeline.....18

Organizational Chart.....20

Business Opportunity Program.....21

Diversity Plan Compliance.....25

Equal Opportunity.....31

The Role of the Independent Compliance Officer Consultant Firm.....32

The 2016-17 Fiscal Year in Review.....33

The 2017-18 Fiscal Year in Review.....35

Going Forward 2018-19.....36

Architect and Construction Manager Project Assignments.....37

Appendix A – Table of Professional Service Firms and Contractors.....38

Appendix B – Swing Space Allocations Going Forward.....46

Appendix C – Table of Estimated Construction Costs and Anticipated State Aid.....47

Appendix D – Table of Debt Service vs. Anticipated State Aid Reimbursement.....48

Appendix E – Table of M/W/S/DBE Subcontractor Firms.....50

Executive Summary

The Rochester City School District (RCSD or District) has a demonstrated, twenty-year commitment to providing regular maintenance to its schools. This commitment, however, has been hampered by limits in borrowing and the capacity to take on additional debt service. While the buildings have been maintained, they are in need of updates to bring the learning environment into the 21st century and provide students with facilities that are comparable to neighboring districts.

The RCSD occupies fifty school buildings. Nearly half are more than 75 years old. Given the number and overall age of the buildings in the inventory, there is a constant demand for building repair and upgrading. The RCSD does not have any buildings that have dangerous conditions; however, given the nature and use of the buildings, it still must maintain a constant emphasis on long-term building maintenance. In addition to maintenance, it is also important that the instructional demands of the District's school programs are met. These demands include:

- Maintaining low class sizes
- Providing Pre-Kindergarten classrooms
- Creating labs for computers and other technologies
- Expanding Special Education rooms
- Providing space for school-based health centers and Student and Family Support Centers.

When translated into design standards, these measures help to improve the overall delivery of a quality instructional program and a quality learning environment.

The Rochester Schools Modernization Program (RSMP) is the product of special legislation in 2007 by the State of New York to provide the City of Rochester (City) and the City School District (District) with increased flexibility to meet the needs of its schoolchildren via alternative financing mechanisms for the multi-phase, multi-year school building reconstruction and additions, collectively known as the RSMP. By definition, the plan is intended to optimize program initiatives and address the major deferred maintenance priorities approved on a phase-by-phase basis of coordinated projects over the life of the program.

The Legislation created and designated the Rochester Joint Schools Construction Board (RJSCB or Board) as the agent to undertake the RSMP projects on behalf of the City and the District. Formed in the fall of 2008, the RJSCB comprises three members appointed by the RCSD Superintendent of Schools and three appointed by the Mayor of the City of Rochester. The seventh member is jointly appointed by the Superintendent and the Mayor. The RJSCB's Independent Compliance Officer (ICO) is a non-voting member hired by the Board. The City's Finance Director is currently the Treasurer of the RJSCB, and the District's Director of Operations serves as the Vice President. In addition, senior staff from the District's Facilities Design Group serve as the operational liaison to the RSMP Program. The established working relationship is the RJSCB Chair, along with the Program Manager, meets with District Superintendent's leadership team to review the program on at least a monthly basis.

The Board conducts its business meetings generally on the first Monday of the month at 4:30 p.m. Meetings are held at the Program offices located at 70 Carlson Road, Rochester NY 14610. Monthly RJSCB business meetings, as well as all Committee meetings, are open to the public. The Board's M/WBE and Services Procurement Committee and the Finance Committee meet each month generally on the Thursday prior to the monthly business meeting. Those meetings take place at 7:30 am and 9:00 am respectively.

For scheduling, agendas, minutes and other details, visit the Board's website at www.rcsdk12.org/page/706.



Our Team

Rochester Joint Schools Construction Board



(Pictured above clockwise from top left are 2017-18 Board Chairman Allen Williams, Board Vice Chairman Michael Schmidt, Board Treasurer Charles Benincasa, Member Bob Brown, Member Ineabelle G. Cruz, Member Norman Jones, Member Thomas Richards and ICO Brian Sanvidge.)

Rochester Schools Modernization Program



(Pictured above from left to right are Program Director, P  pin Accilien; Deputy Program Director, Roland Coleman; and Special Assistant/Board Liaison, Alexandra Fleischer.)

The RSMP team also includes: Mark AuClair, Robert DiPaola, Linda Dunsmoor, Garrett Gruendike, Wayne Hermanson, Travis Miller, Kimberly Mitchell, Marcial Morales, Justin Salgot, Tabatha Santiago, Robert Skeele, John Springer, Richard Stoffel, Corey Strickland, and Marlana Zink.

RJSCB- General Information

The Legislation created the Rochester Joint Schools Construction Board (RJSCB) and designated them as agent for the City and the District to undertake the RSMP projects on their behalf.

The powers granted to the RJSCB enable a more efficient approach to the reconstruction and rehabilitation of the District's educational facilities.

Meetings:

Monthly RJSCB business meetings, as well as all Committee meetings, are open to the public.

The Board conducts its business meetings generally on the first Monday of the month at 4:30 p.m. Meetings are held at the Program offices located at 70 Carlson Road, Suite 200, Rochester New York 14610.

Monthly RJSCB business meetings, as well as all Committee meetings, are open to the public. The Board's M/WBE and Services Procurement Committee and the Finance Committee meet each month generally on the Thursday prior to the monthly business meeting. Those meetings take place at 7:30 am and 9:00 am respectively.

Bylaws and Organizational Documents:

The Board conducts annual organizational meetings to review and revise their by-laws and other policies. These documents are listed below and can be viewed on the Board's website.

1. By-Laws (Revised December 2017);
2. Responsibilities of Board Members (Revised December 2017);
3. Confidentiality Agreement - Executive Session (Revised December 2017);
4. Code of Ethics Policy (Revised September 2014);
5. Communications Policy (Revised December 2017);
6. Procurement Disclosure Policy (Created March 2010);
7. Purchasing and Procurement Policy (Revised September 2014);
8. Consent Agenda Policy (Revised December 2017);
9. Pay Requisition Approval Procedures (Revised January 2017).

Website:

In addition to meeting dates, the Board's website also contains the following documents:

1. Agendas;
2. Minutes;
3. Resolutions;
4. Committee Reports;
5. ICO's Monthly Reports;
6. RJSCB's Annual Reports;
7. Program Background (i.e. Cooperative Agreement, Strategic Plans Project Labor Agreement).

Visit the Board's website at www.rcsdk12.org/rsmp.

Program Highlights

Improving Learning Environments

- A growing body of research demonstrates that the quality of school facilities plays an important role in students' ability to learn well. The RSMP ensures that each facility not only meets district standards, but is safe, modern, and comfortable.

Supporting Minority Workers

- The M/W/S/DBE Business Utilization overall goal of 33% is currently being exceeded with 47% of the total contract value awarded to EBEs. Roughly \$60 million has been sub-contracted to M/W/S/DBE firms to date.
- The Workforce Participation overall goal of 30% is currently being exceeded with 36.8% of the total participation being comprised of minorities and women.
- The largest minority-owned architecture firm in the country, Moody Nolan, is lending its talents to two projects in Phase II.
- The Business Opportunity Program (BOP) assists Eligible Business Enterprises (EBEs) in upgrading their business skills to be more viable subcontractors for the RSMP, foster familiarity, and deeper relationships as the EBE builds confidence and capacity.
- Several BOP participants are already working on RSMP projects.
- The RSMP also provides short term, revolving loan financing opportunities using the City's REDCO as the most efficient vehicle to administer and process the Revolving Loan Program (RLP) new to Phase II.

Site and Building Upgrades

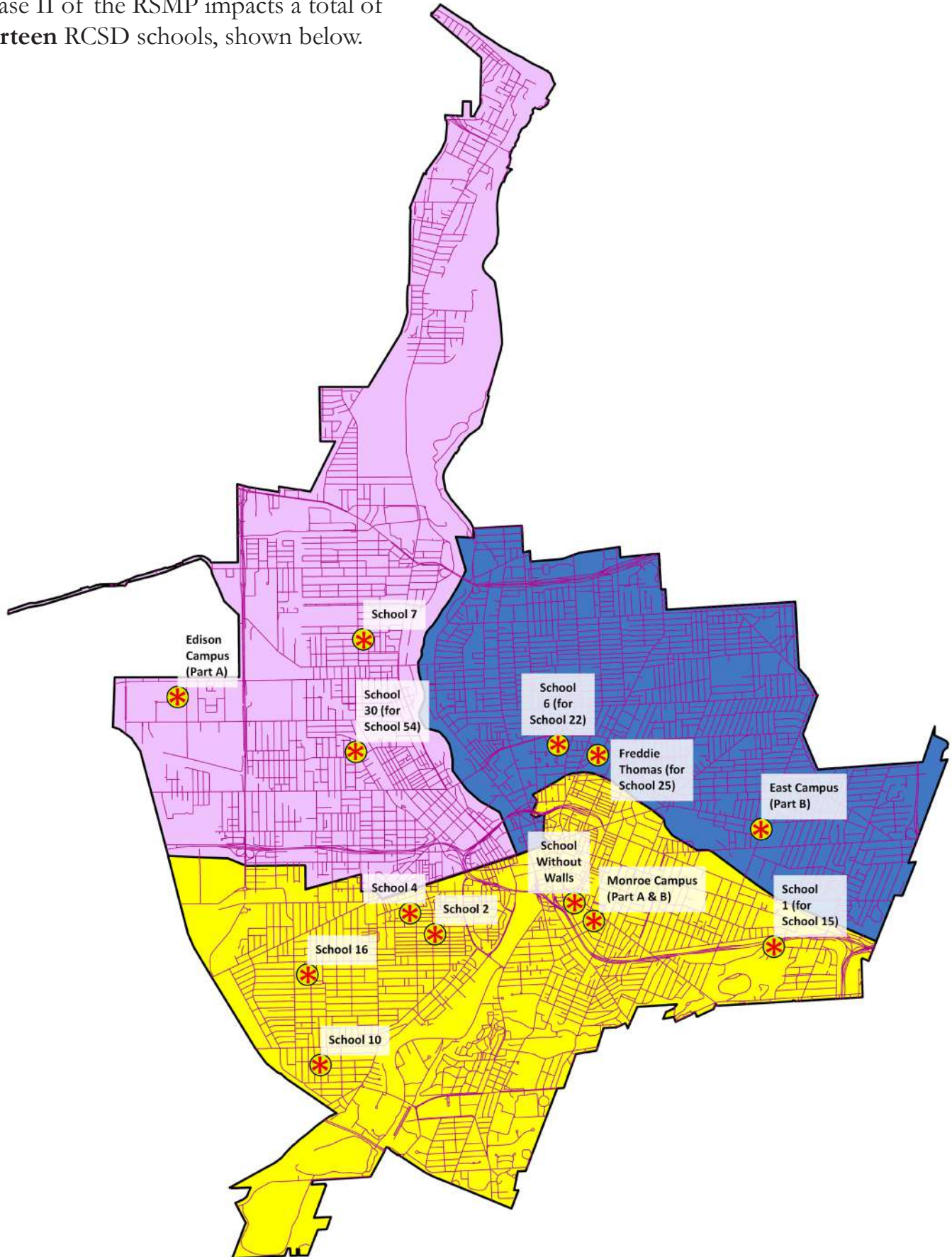
- The District benefits from energy savings due to tightened building envelopes and more efficient mechanical and electrical equipment.
- Upgrading the food service facilities in the Phase II projects allows for much healthier food choices.
- Updates to building sites in Phase II will make for safer pedestrian, bus, and car travel.
- Although technically a Phase I project, the former Maynard's facility at 1776 N. Clinton Avenue was demolished in the Summer of 2017, creating additional playfields for Helen Barrett Montgomery School 50 and improving the overall neighborhood.

Community Engagement

- The RSMP works closely to secure District and community feedback during the planning, design, and construction phases.
- Building Advisory Committees (BACs) are established during the design phase of each project in order to advise the architect regarding the particular needs of each school.

Phase II Projects

Phase II of the RSMP impacts a total of **thirteen** RCSD schools, shown below.



Overview of the RSMP

Following two orientation sessions in late fall 2008, the RJSCB initiated its official proceedings in January 2009. The RJSCB began by completing a number of foundational tasks, including the adoption of RJSCB Bylaws, the election of Officers, and the establishment of a committee system.

In August of 2009, following an extensive Request for Proposals search and interview process, the RJSCB identified its general counsel. In January of 2010, a Cooperative Agreement among the RCSD, the City, and the RJSCB established the roles, relationships, and responsibilities of each party as related to the RSMP. The Cooperative Agreement confirms that the City shall not be obligated, directly or indirectly, to: provide funding for the projects, provide payment for debt service on any bond or notes, or have any other obligations including, specifically, any local share obligation related to the RSMP.

Additionally, the RJSCB established policies covering ethics, responsibilities, procurement, and communications; selected its Financial Advisor and Bond Underwriter for Phase I of the RSMP; selected a firm to provide an energy efficiency study; and identified its Independent Compliance Officer (ICO) following an extensive RFP search and interview process.

In 2010 the RJSCB hired a Program Manager, Gilbane Building Company (Gilbane), in association with Savin Engineers, P.C. (Savin), to implement Phase I of the RSMP. The first task of the Gilbane / Savin team was to devise a Master Plan for the project using the criteria set forth by the District

Working with the ICO and the Program Manager, the RJSCB established a Preliminary Diversity Plan for the program that established the Minority and Women Business Utilization goals and Work Force Participation (EEO) goals for the program. (The goals and current RSMP participation are discussed in further detail in the MBE/WBE/SBE/DBE Business Utilization and EEO Compliance section of this report.)

Phase I

Phase I included renovations and alterations to 12 buildings, plus a District-Wide Technology project (technology upgrades within those 12 buildings) with a total value of \$325 million. The first phase of the program consisted of approximately \$237 million in budgeted 'hard' construction expenses and \$88 million in design, management, financing, District-Wide Technology, and other "soft" incidental program expenses. The anticipated Building Reimbursement Aid, as calculated by the State Education Department maximum cost allowance (i.e., MCA) formulas, was approximately \$287 million, resulting in \$38 million in EXCEL and local costs (11.7%).

Beginning in the summer of 2010, the Gilbane/Savin team and SWBR Architects created the Phase I Master Plan for the RSMP. The Phase I Master Plan identified twelve school projects and a technology project (District-Wide Technology) to be included in Phase I of the RSMP. In addition to repairs to the physical components of each facility, such as the mechanical systems, the building infrastructure, and the classrooms, the Phase I Master Plan became the road map for implementing the District's educational plans for the future. The RJSCB conducted seven public meetings in September, October, and December 2010 for the purpose of seeking public comment and incorporating said comments into the draft Phase I Master Plan. The Phase I Master Plan was subsequently approved by the Board of Education and the State Education Department in 2011. The Master Plan was subsequently approved by the Board of Education and the New York State Education Department in 2011.

The Phase I Master Plan sets out concepts and ideas on how the District's overall strategy can be implemented. The specific project designs are accomplished by those individual architects hired for each project. The Phase I Master Plan provides the District with flexibility to meet changing needs. This was evidenced by the District's decision during Phase I to add full building air conditioning to five projects, add the renovation of the Franklin Auditorium, and add a synthetic turf field at East High School. In order to accomplish these additional scope items, with the consent of the RCSD, funding was transferred from one of the original projects listed in the Phase I Master Plan, the Jefferson High School Project.

The RJSCB engaged the services of a consulting firm to assist with State Environmental Quality Review Act (SEQRA) documentation for the RSMP. The Board acted as the lead agent for the assessment. In March of 2011, the RJSCB determined that the Phase I projects would not result in significant adverse environmental impacts. The Negative Declaration was distributed by the RJSCB to all interested and involved parties.

In the spring of 2011, the RJSCB selected the Architects for the first group of six school projects (Phase 1a). Those school projects included: School 17, School 28, School 50, School 58, Charlotte High School, and Franklin High School. (See Appendix A - Table of Professional Service Firms.)

The RJSCB hired a Technology Consultant to develop the District-Wide Technology (DWT) project, act as the single point of contact for all technology-related components of the RSMP, and provide seamless technology integration in all schools, while also adhering to technology standards as set forth by the District. (See Appendix A - Table of Professional Service Firms)

The RJSCB also engaged a food services consultant for the RSMP to ensure a site-based food service delivery system that complements the operations of the District's food service department and central kitchen. (See Appendix A - Table of Professional Service Firms.)

In the summer of 2011, the RJSCB hired Construction Managers for the 1a projects to help plan the logistics and implement the construction. (See Appendix A - Table of Professional Service Firms.)

In the fall of 2011, the next group of Architects was selected by the RJSCB to plan and design the second group of projects (Phase 1b). Those school projects included: School 5, School 12, Monroe High School, East High School, and the Edison Technology Campus. Construction Managers were later selected in 2012 to plan and implement the construction of these projects. (See Appendix A - Table of Professional Service Firms.)

In 2012, the RJSCB officially selected the County of Monroe Industrial Development Agency (COMIDA) as the source to provide the Bond funds necessary to carry out the program. The bonds will be paid by State Aid reimbursements up to the legal limit, the balance of which reverts to the true local cost share. A Project Labor Agreement ("PLA") specific to the RSMP Phase I was also negotiated in 2012 with the Rochester Building and Construction Trades Council. The stipulations of the PLA provide economic savings to the project and support the special legislation's goal for the RJSCB to encourage a diverse workforce across all aspects of the program.

The first four projects were bid in the spring of 2012 and began construction in July 2012. School 17, School 50, Franklin High School, and Charlotte High School were completed in the summer of 2013. School 58, a two-year project, was also bid in 2012. Construction started in the fall of 2012 and was completed in December of 2014.

The second group of projects was bid in 2013 and began construction in the summer of 2013. Those projects included: School 5, School 28, East High School, and the Edison Technology Campus. These projects were all completed in the summer of 2014. Jefferson High School was bid in 2014 and completed in summer 2014.

The final two projects, called the 1c projects, were School 12 and Monroe High School. School 12 students returned to their building in September 2016. Monroe High School construction proceeded seamlessly into Phase II in 2016.

Please see the following page for the summary of Phase I costs and state aid, as well as a summary of minority business and workforce participation.

Summary of Total RSMP Phase I Project Costs and Anticipated State Aid

Building Name	Cost (in Million \$) Hard and Soft Costs	Anticipated State Aid Cost Allowance (in Million \$)	Current Project Status	Construction Starts	Construction Complete
John Williams School #5	\$21.6	\$19.8	Complete	Summer '13	Summer '14
James P.B. Duffy School #12	\$25.5	\$21.4	Complete	Fall '14	Summer '16
Enrico Fermi School #17	\$28.6	\$26.4	Complete	Summer '12	Summer '13
Henry Hudson School #28	\$23.9	\$20.2	Complete	Summer '13	Summer '14
Helen B. Montgomery School #50	\$27.0	\$23.4	Complete	Summer '12	Summer '13
World of Inquiry School #58	\$44.4	\$28.7	Complete	Fall '12	Winter '14
Charlotte High School	\$28.6	\$27.8	Complete	Summer '12	Summer '13
Thomas Jefferson High School	\$344k	\$00.324	Complete	Summer '15	Summer '15
James Monroe High School	\$29.8	\$28.2	Complete	Summer '15	Spring '18
Edison Educational Campus	\$26.4	\$24.9	Complete	Summer '13	Summer '14
East High School	\$18.9	\$17.8	Complete	Summer '13	Summer '14
Benjamin Franklin High School (added Auditorium project)	\$11.3	\$11.1	Complete	Summer '12	Summer '14
District-wide Technology Project (incl. program wide expenses)	\$38.9	\$37.0	Complete	Spring '13	Summer '16
Totals	\$325-M	\$287-M (88.3%)	-	-	-

**RJSCB Business Utilization Program Goals,
Phase I**

Category:	Goal	Achievement
MBE	15%	15.74%
WBE	5%	7.42%
SBE	5%	3.77%
DBE	2%	2.33%
TOTAL	27%	29.26%

**RJSCB Workforce Participation Goals,
Phase I**

Category	Goal	Achievement
Minorities	20%	22.88%
Women	6.9%	7.22%
Total	26.9%	30.10%

Source: March 2018 Phase I Compliance Report from the ICO.

Phase II

In December 2014, the RSMP Phase II special legislation was signed by the Governor of the State of New York. Phase II authorized up to 26 projects, comprised of 25 school buildings plus a District-Wide Technology project, with a total value of \$435 million. Following a nation-wide Request for Proposals (RFP) selection process, in December of 2015 the RJSCB hired Savin, a New York State certified MBE firm, a Program Manager for RSMP Phase II. Phase II was authorized at \$435 million with approximately \$315 million in budgeted “hard” construction expenses and \$120 million in design, management, technology implementation, financing, and other “soft” incidental program expenses.

Immediately following the selection of Savin as the Program Manager for Phase II, a tremendous effort to complete the Master Plan for Phase II was put forth in order to avoid a gap between Phases I and II. The RJSCB had previously engaged the services of the Phase I Master Plan Architect, SWBR Architects, to work with the Program Manager and the District. The RSMP team worked closely with the District to determine the infrastructure needs of each building and how to fit the District’s “model program” into each facility. The District’s desire to eliminate transportable classrooms, basement classrooms, and substandard teaching/learning spaces remains as a core principle for Phase II. Through the Phase II Master Plan, the District also continues its strategy to right-size the current seating capacity throughout the District at each grade level using the five- and ten-year enrollment projections.

A series of public meetings was held throughout the months of January, February, and March 2016 to discuss the Phase II Master Plan, leading up to the Board of Education approval of the Phase II Master Plan on March 24, 2016.

In parallel to the planning work taking place on the Phase II Master Plan, the RJSCB engaged a SEQRA consultant, a Financial Advisor and a Bond Underwriter to support those efforts. The financial plan, based on the projects selected by the Board of Education in the Phase II Master Plan, was completed and approved by the Board of Education in April 2016. The financial plan remains contingent upon the District receiving relief on the Maximum Cost Allowance (MCA) for several of the projects identified in Phase II.

Special legislation was approved by the New York State Senate on June 6, 2016 followed by the New York State Assembly on June 16, 2016, authorizing two multi-year cost allowances in a five-year period for the computation of building aid. The Governor signed the bill into law on July 5, 2016. This legislation gave the District the financial aid that it needs to allow the Phase II projects to be done in one phase of construction rather than having to do partial projects, wait five years for the MCA to reset, and then come back to complete the project.

The special legislation was consistent with the goals of the initial authorizing legislation for the Facilities Modernization Program. The special legislation benefits the four schools currently in swing space (Monroe High School, Abraham Lincoln School 22, The Children’s School of Rochester School 15, and John Walton Spencer School 16) or the additional schools slated for renovation in Phase II. It will continue to benefit the entire Rochester community through more construction jobs, more families and staff members benefiting from modernized schools, and more efficient use of taxpayer dollars.

The RJSCB also updated its Diversity Plan for Phase II. This updated plan increases the business utilization goal by 6% and the workforce participation goal by 3% over the Phase I Diversity Plan, and includes the implementation of an initiative called the Business Opportunities Program (BOP). The BOP consists of a series of training programs that are supported by Mentor/Protégé relationships with Prime Contractors and Construction Managers (CMs) to help minority, women, small, and disadvantaged businesses participate in the RSMP. There are networking events that include CMs, General Contractors and other prime contractors to support minority, women, small, and disadvantaged businesses’ relationship building efforts. The objective is to provide education and hands-on training to underserved and underprivileged business entrepreneurs in order to build capacity in the City and the surrounding area.

The BOP also helps to address financing and cash flow needs through a Revolving Loan Program (RLP) to help minority, women, small, and disadvantaged contractors address the challenges that small businesses have in funding initial expenses, payroll, and mobilization costs relating to RSMP contracts.

The Phase II Master Plan, the corresponding Financial Plan, and the Diversity Plan were provided to NYSED and to the New York State Comptroller for review and approval. In parallel, the first project in Phase II, Monroe High School, has successfully segued from Phase I, and Phase II construction is underway.

Initial Phase II funding of \$2.7 million was provided by the RCSD through May 2016. Through a Municipal Agreement, the City committed to providing the program with Bond Anticipation Note (BAN) financing in August 2016. The \$32 million City BAN funded the continued design, planning, and initial construction of Monroe High School, as well as the design of the other Phase II projects until the first bond sale occurred in August of 2017.

Throughout the remainder of 2016, the RJSCB engaged the services of the other design consultants and professional services firms necessary to implement the Phase II program, including: Legal Services, Independent Compliance Officer, Architects, Construction Managers, Inspection and Testing Services, Commissioning Consultants, Environmental Consultants, Site Security Consultants, Food Service Consultants, and Contractors.

As of 2017-18, all Phase 2A and 2B projects are under construction. Phase 2C designs have been completed and construction will begin in July 2018, and the 2D program verification has been completed. All Phase II professional services consultants are selected and all Phase II construction contracts were awarded, with the exception of School 10/37, which is being rebid, and School 30/54, which is completing program verification.

Summary of Total RSMP Phase II Project Costs and Anticipated State Aid

Building Name	Cost (in Million \$) Hard and Soft Costs	Anticipated State Aid Cost Allow- ance (in Million \$)	Construction Starts	Construction Complete
James Monroe Part HS – Part A	\$27.4	\$27.0	Summer '16	Summer '17
Virgil I. Grissom School #7	\$25.3	\$25.0	Winter '17	Summer '18
John Walton Spencer School #16	\$33.7	\$33.2	Winter '17	Summer '18
School #16 (SSBA Allocation)*	\$4.2	-	Winter '18	Summer '18
East High School	\$55.7	\$54.9	Fall '18	Fall '21
Freddie Thomas	\$4.2	\$4.1	Summer '17/'18	Summer '17/'18
School Without Walls	\$9.1	\$9.0	Summer '17	Summer '18
Martin B. Anderson School #1	\$21.3	\$18.3	Summer '17	Summer '18
James Monroe HS – Part B	\$31.8	\$31.4	Fall '17	Summer '18
Monroe (Community Schools Grant)*	\$1.8	-	Spring '18	Summer '18
Edison HS	\$24.6	\$24.1	Summer '18	Summer '20
Dag Hammarskjöld School #6	\$28.2	\$26.6	Summer '18	Fall '19
Dr. Walter Cooper Academy School #10	\$27.1	\$22.1	Summer '18	Fall '19
School #10 (SSBA Allocation)*	\$2.3	-	Summer '18	Fall '19
George Mather Forbes School #4	\$28.1	\$18.7	Summer '18	Fall '19
School #4 (SSBA Allocation)*	\$2.0	-	Summer '18	Summer '20 (+/-)
Clara Barton School #2	\$31.1	\$27.9	Summer '18	Summer '20 (+/-)
General Elwell S. Otis School #30/#54	\$19.8	\$19.8	Summer '19	Summer '20
District Wide Technology	\$67.0	\$65.0	2017	2021
Totals	\$444.7	\$407.1	-	-

*Note, the highlighted projects involve supplemental funds being allocated from separate State grants that have been made available to the District.

RJSCB Business Utilization Program Goals, Phase II

Category:	Goal	Achievement
MBE	17%	29.11%
WBE	10%	11.97%
SBE	3%	3.71%
DBE	3%	2.36%
TOTAL	33%	47.15%

RJSCB Workforce Participation Goals, Phase II

Category	Goal	Achievement
Minorities	22%	29.51%
Women	8%	7.30%
Total	30%	36.81%

Source: March 2018 Phase II Compliance Report from the ICO.

Community Engagement

The RJSCB is committed to ensuring that the projects in Phases I, II, and III support the educational objectives for students by assuring that building stakeholders have an active voice in the design process. The RJSCB is also committed to ensuring that neighborhood stakeholders have a voice in the design process. The Building Advisory Committees (BACs) have been established for each school project through the cooperation of the Program Manager, the Architects, and the building Principals. The BACs include participation from District parents, students and staff, City of Rochester representatives, and neighborhood stakeholders.



Phase II Updates & Summaries

PHASE 2A/2B

Monroe High School Phase 2a/2b

The project entails complete reconstruction and additions. Construction contracts for Phase 2a were awarded in December 2016. Construction started in January 2017 and is ongoing. Demolition of the existing School 15 and the existing Cafeteria began in June 2017, and Phase 2b was awarded in September 2017 with overall substantial completion in August 2018.

East High School Phase 2a

An early roof project has been approved by NYSED and construction was completed in Summer 2017. In support of the University of Rochester's program changes as the Educational Partnership Organization (or, EPO) at East High School, the Phase II scope of work has been established as a balance between infrastructure and program needs in order to keep this project within the approved Phase II Master Plan budget. It is recognized that significant additional Program and Work Scope exceeded the budget in Phase II and must defer to a future Phase III. The balance of the Phase II project will be awarded in August 2018, with final completion in June 2021.

Virgil Grissom School 7 Phase 2a

School 7 is undergoing a complete reconstruction and an addition. Through the RSMP, the building will receive air conditioning and six (6) new classrooms. The early demolition (including portables) and abatement package was approved by NYSED and awarded by the RJSCB in January 2017. Work began in February 2017 and was completed on schedule. The main project was bid and awarded in May 2017. Students and staff will return to the building in September 2018.

John Walton Spencer School 16 Phase 2a

Due to the school being closed by the District in 2012, extensive community input was gathered from neighbors in the Program Verification Phase of design for School 16. Nearly 20 design concepts were drawn before consensus was reached to include a classroom addition, an enlarged Library/Media Center, a new/enlarged kitchen, and a new gymnasium addition (not originally planned). At School 16, demolition (including portables) and abatement began in April 2017. The balance of the Phase II project was awarded in August 2017, with final completion in August 2018. It should be noted that without SED's agreement to 'fast track' in terms of early bid packages and approvals, the complexity and extent of work could not have been achieved in the interest of returning students to their 'home' school after three years in swing space.

School Without Walls Commencement Academy Phase 2b

The project at SWW includes a gymnasium, new digital art and studio art classrooms, new Special Education classrooms, renovated science labs, site work for the parking lot and sidewalks, roof work, new windows, interior renovations (e.g. toilets), and infrastructure updates. Construction contracts were awarded in June 2017, and the final completion is on schedule for August 2018.

School 1/15 Phase 2b

The former School 1 will undergo a complete reconstruction and addition in preparation to become the home of The Children's School of Rochester. Plans include a new classroom addition (9 total including Special Education), a dedicated parent drop-off area/entrance, a new bus loop, parking, and other site improvements. In addition, the former transportable classrooms were removed as part of the early demolition and site package approved by NYSED and are now complete. Construction started the Summer 2017, and the School 15 students and staff will move into their new home in August 2018.

Dr. Freddie Thomas Learning Center Phase 2b

The RJSCB demonstrated its flexibility through a major scope change requested by the RCSD late in the spring of 2017. The project originally included only a new Main Office, playground, and the 'make ready' work required to allow students from Nathaniel Hawthorne School 25 to make the initial relocation to Dr. Freddie Thomas. The District's intent is to 'co-locate' two (2) schools at the DFTLC campus, thus a second/new main office provides the dedicated facilities to assure efficient operations. The RCSD Board of Education has allocated \$4 million in funding and the project has proceeded with the second/new main office, while also redirecting scope priorities to the replacement of the chiller plant and pool filtration system as essential basic building infrastructure needs, consistent with the District's Building Condition Survey. The new Main Office was occupied in the spring of 2018, and the air conditioning/chiller and pool improvements were completed in time for use for the summer 2018 programs.

Edison Career & Technology High School Phase 2b

The Edison project includes a complete interior reconstruction, and exterior renovation at the southwest corner of the building (housing the former auto repair and wood working programs), as well as roof work, major structural reinforcement, and classroom renovations. In addition to upgrading automotive technology (including a NYSAA component), departmental re-structuring will consolidate the arts, advertising, interactive media, digital media production, along with a new 'makerspace' for multi-disciplinary projects. The early site and roof replacement work were completed in the Summer of 2017, while the balance of the project will be completed in August 2019.

Summer 2018 will experience hyperactivity, as six (6) school projects will be completed with the RCSD taking full re-occupancy of the Monroe Campus, Grissom School 7, Spencer School 16, Dr. Freddie Thomas, School Without Walls, and the Community School of Rochester (at the former School 1). At the insistence of the University of Rochester as the Education Partnership Organization (EPO), their priority was to retain all of the students at the re-named East Lower/Upper Campus (i.e., grades 6 to 12, the only such configuration in the District) on-campus together throughout the Construction Phase. The implication being more intricate safety provisions are necessary to achieve the required complete separation of school students and staff from all construction activities. The Construction Phase for the East project, accordingly, must extend to June 2021, otherwise all of the Phase 2A and 2B projects remain on-schedule and on budget.

PHASE 2C

Clara Barton School 2

The 'third wave' of projects in the RSMP Phase II begins with the reconstruction and expansion of School 2. A new eight (8) classroom addition will feature a 2-story 'makerspace' to encourage collaborative, multi-grade learning and hands-on student projects. The construction bids were awarded 9 April 2018, and final completion is scheduled for January 2020.

Dag Hammarskjold School 6

The former Lincoln School 22 will be relocated to the reconstructed and expanded School 6. The project completely reorganizes the school, relocating the original main office from a totally obscured location to a prominent control point creating a logical, visible, and secured main entry. A total of six (6) new classrooms will be built, including Special Education, and an 'art/makerspace' with a high sloped ceiling as the feature that re-images the campus. The construction bids were awarded 9 April 2018 and final completion will occur in August 2019.

George Forbes School 4

This school is located on a very tight site that requires using the adjoining city park as the outdoor play space. By necessity, a prior addition that created major split floor levels, with obsolete basement classrooms will be demolished, and replaced with a 2-story addition, housing seven (7) classrooms including Pre-K, and a much-needed receiving dock. A sub-dividable 'makerspace' highlights the new second floor addition. The construction bids were opened 16 May 2018 and were on-budget with the award pending the SED approval of the Smart Bond (which helps to fund the Pre-K classrooms). The project completion was scheduled for August 2019, and is now being reevaluated for a mid-year move in the 2019 or 2020 school year due to the outstanding Smart Bond approval.

Dr. Walter Cooper School 10

The School 10 project is a reconstruction with a major addition that replaces a major portion of the existing obsolete/non-conforming wood construction. The most historic main entry/front side of the school is being retained, consistent with the preferences and priorities of the State Historic Preservation Office (SHPO), which holds a formal required sign-off on the final design. The new addition has 16 classrooms (including Special Education), and the Construction Phase has been re-scheduled to start in Fall 2018 with completion of the 2020 school year.

PHASE 2D

Flower City School 30/54

This project involves the consolation of the Flower City School at the former School 30 site. The facility will be reconstructed/expanded with a new 7-classroom addition including Pre-K and a new library as the feature element, providing community access. In a joint initiative between the City of Rochester and the RCSD, strong consideration is being given to the acquisition of existing adjacent residences (6 total), many of which are also in disrepair. The expanded site would accommodate much-needed on-site bus loading, parking, and play area as an urban campus. The project recently completed the Program Verification Phase of design, and construction is scheduled for completion in Summer 2020.

RSMP Timeline

- Rochester Joint School Construction Board (RJSCB) formed
- Bylaws adopted
- Committee system established
- General counsel selected

2008-09

- Master Plan approved by RCSD Board of Education

- Professional Service Firms Selected:
 - Architects (Phase 1a and 1b)
 - District-Wide Technology
 - Food Services
 - Construction Managers

2010-11

- Work begins on Schools 5, 28, East and Edison High Schools

- Work completed on Schools 17, 50, Franklin and Charlotte High Schools

2012-13

2009-10

- Cooperative agreement formalized
- Phase I Program Manager selected
- Diversity goals established
- SEQRA process begun
- Master Plan developed

2011-12

- Phase 1b Construction Managers selected
- Work begins on Schools 17, 50, 58, Franklin and Charlotte High Schools

- Business Opportunities Program debuts

- Work continues at Monroe High School

- Professional Services firms selected for the 13 Phase 2a-2c schools

- Construction begins at Schools 7, 16, 1/15, School Without Walls, the Dr. Freddie Thomas Learning Center, East and Edison High Schools

- Design work begins at Schools 2, 4, 6, and 10

- Multi-year work begins on School 12 and Monroe High School

- Initial planning begins for Phase II, including new enabling legislation

2014-15

2016-17

2013-14

- Work completed on Schools 5, 28, East, Edison, and Jefferson High Schools

2015-16

- July 2016: Phase II Enabling Legislation signed into law by Governor

- Phase II Program Manager selected

- Phase II projects identified and scheduled into four subphases: 2a, 2b, 2c, 2d

2017-18

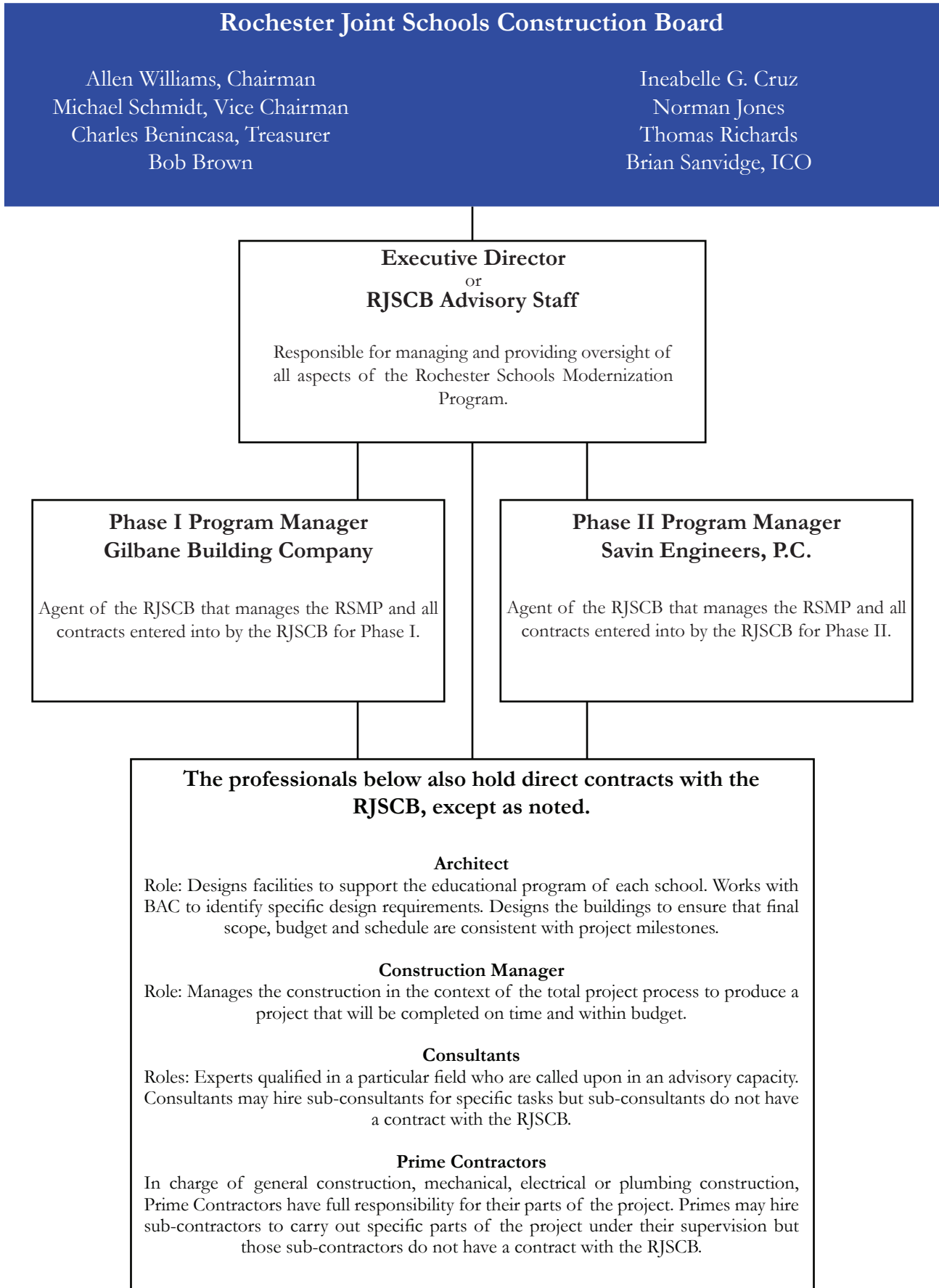
- Design work begins at Flower City School 30/54

- Professional Services procurement is completed for Phase II

- Preparing for Phase III Strategic Plan

- PLA negotiations resumed with Building and Construction Trades Council

RSMP Organizational Chart



Business Opportunity Program

1. Instructional Series

The BOP's Instructional Series (IS) is a free, unique learning resource that utilizes seasoned professionals from companies contracted with the RJSCB and community experts to serve as facilitators on a variety of business topics. Each cycle is 18 weeks long and the participants convene two evenings per week. It is open to any business enterprise that has at least a DBA and six months in business and/or one client in their business name. The curriculum consists of seven modules and covers topics relevant to a wide range of areas affecting business operations, finances, project management and marketing.

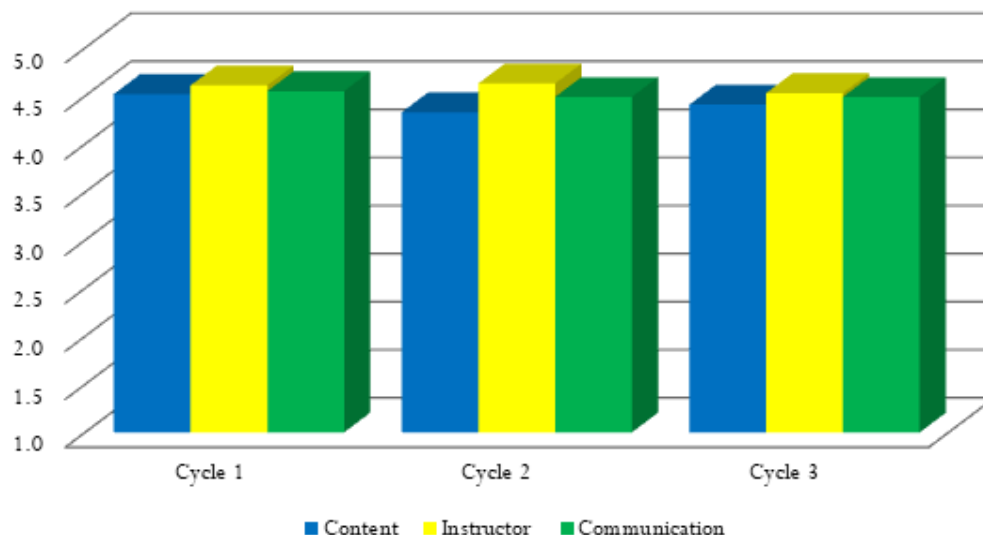
The first cycle began in August 2016 and, of the initial 20 firms that began the cycle, 13 of them met the minimum 75% attendance threshold and received a Certificate of Completion at a ceremony held at RSMP on January 11, 2017. Since then, six of the 13 graduates have successfully secured contracts or subcontracts as participants in Phase II.

The second cycle began in February 2017 and its final session was on June 21, 2017. In this cycle, we instituted a class assignment of a business plan exercise along with the 75% minimum attendance as a requirement for completion. All five businesses completed the assignment and ended the cycle with near 100% attendance. They received a Certificate of Completion at a ceremony held at RSMP's new headquarters on July 19, 2017.

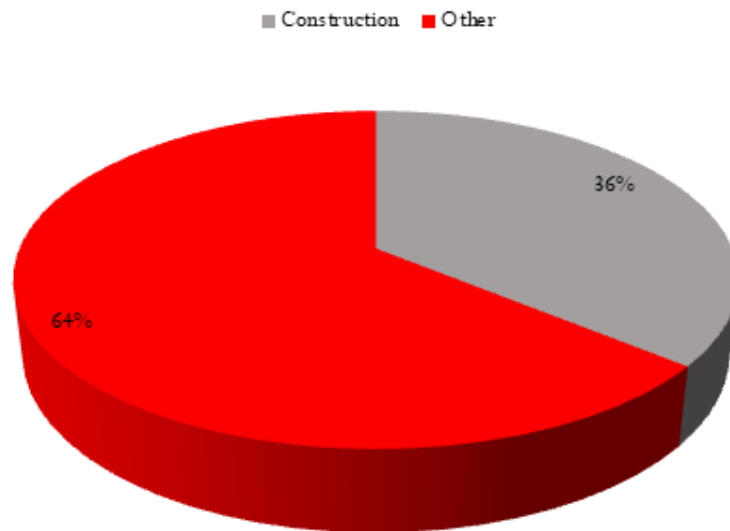
The third cycle began in August 2017 and the cycle completed on December 18, 2017. There were 20 firms who began the program. In addition to implementing online assessments at the end of each module, we raised the minimum attendance requirements to 85% and, ultimately, 11 firms were able to meet the requirements and receive a Certificate of Completion. The ceremony was held on January 17, 2018 and was attended by the Mayor, City Council and Rochester City School District administration.

As indicated by evaluation surveys filled out by all participants, the overall impression of the Series' value and benefits is favorable.

Evaluation Averages for Completed Cycles



Enrolled I.S. Business Entity Types To Date



Recruitment for Cycle 5 has begun and we already have participants signed up.

2. Mentor-Protégé Program

The Mentor-Protégé Program (MPP) facilitates training and mentoring in a direct, engaging and practical manner intended to produce long-term positive impacts. It has been designed to motivate and encourage all holders of prime contracts with RJSCB to provide mutually beneficial developmental assistance to local Eligible Business Enterprises (EBEs) to enable such emerging businesses to 'learn the ropes' from more experienced businesses. It is providing a dynamic opportunity for the emerging EBE Protégé to overcome barriers that typically inhibit or restrict the success of its business initiative. It also encourages professional service firms and prime contractors as Mentors, to enhance the business management and technical capabilities of the Protégé. In order to be eligible to participate in the MPP as a Protégé, a business must:

- a) successfully complete the BOP's Instructional Series, or
- b) have a prime or subcontract on one of the RSMP projects.

The Mentor/Protégé relationship lasts from six months to a year. This allows the EBE to meaningfully benefit from the knowledge and time-tested experience of the mentor firms and for the program to support as many Mentor/Protégé relationships as possible. A modest allowance has been included in the Primes' contracts to serve as reasonable reimbursement for their time and resources contributed as Mentors to MPP.

After the first cohort of the IS completed their semester, they were given the opportunity to sign up for the MPP as inaugural participants. Professional service firms were selected as Mentor matches for the seven IS Graduates who requested further assistance. The pairings were based on the Graduates' areas of need that they have specified and for which BOP Administrators have confirmed the Mentor has the resources and/or capacity to provide tailored assistance. In areas where the Protégé's goals exceed the capacity of the Mentor, BOP has created a mechanism where third-party resources are able to sign an MOU with the Mentor to provide needed assistance to the Protégé. The Mentor is still responsible for tracking the progress of that relationship.

A Developmental Plan serves as the template for identifying each pairings' mutually agreed objective goals and duration. BOP has devised a system of five meetings to assist the Protégé with creating those goals and traversing through the process.

In January 2017, BOP Administration completed its review of DP-1 utilization plans submitted from prime contractors for the Monroe High School 2-A project and made recommendations for initial pairing relationships. Three EBE subcontractors have been paired with respective Mentors and to date the pairings have demonstrated productive value.

Revolving Loan Program

As a reflection of the RJSCB's effort to remove barriers and promote business growth, a Revolving Loan Program (RLP) was designed to help Eligible Business Enterprises (EBE's) meet their short-term working capital needs on RSMP projects. With access to a disbursement maximum of \$10,000 per occurrence, a loan can be used to finance the direct costs of performing under a contract with the RJSCB with regard to payroll, supplies, equipment and other overhead.

To accommodate making the loan process easy to implement, navigate and disburse, an RLP short form application was created that is reviewed by The RLP Committee for approval within 3 business days. To help incentivize utilization by qualified EBE's, there are no credit checks and zero (0%) interest applied with only a minimal administrative fee. The fund's revolving balance is secured by a replenishment system based on monthly payment requisitions that require the loan to be repaid within 90 days.

RSMP partnered with REDCO from the City of Rochester to administer the loan disbursements and repayments. Additionally, the RJSCB authorized a \$150,000 contribution of the State Attorney General funds from Phase 1 to be added to the account, making a total of \$250,000 available to loan applicants.

To date, there have been four applications for the loan and all four have been satisfied. The loan program is introduced to the EBE community through various channels including the quarterly newsletter, the Instructional Series, the Mentor/Protégé Program and individual outreach. BOP has built and manages a database for Building Advisory Committees (BAC's) for each Phase II school project. This will facilitate efficient coordination of communications regarding project developments and progress.

3. Community Outreach & Engagement

Website

Since its inception in May 2017, BOP has utilized the Program website: www.rsmppnews.net, as the primary channel to communicate timely information to the general public and businesses associated with the Program. The site provides an immersive view that is designed to keep visitors up to date with Phase II developments involving projects, bids, RFPs and other important information.

Approved resolutions, procurement awards, monthly meetings and other decisions the RJSCB engage in are posted in addition to programmatic documentation such as the Strategic Plan, Diversity Plan, Annual Reports and SEQRA studies. The site serves as the primary source for information about the BOP.

Additionally, design plans for Phase II schools and project portfolios featuring schools completed in Phase I are displayed. Another enhancement BOP has delivered is improved digital mapping to help identify general trends in the location of workforce labor and EBE businesses.

Newsletter

The BOP produces a comprehensive newsletter, RSMP News, to detail Program progress, relevant activities and significant events. The publication is distributed using a database listing of community stakeholders, parents, faculty, RCSD and City Hall representatives, BAC members, industry service professionals, churches, primes and subcontractors. The newsletter is also posted on the www.rsmppnews.net website. To date, three editions have been created and dispersed by e-blast and delivery at designated pulse points throughout the City.

Content typically includes: pictorial features of graduating classes from the Instructional Series, EBE profile interviews, design and construction progress articles and other significant statistical accomplishments occurring in diversity, compliance, and BOP initiatives.

Networking Events

At the end of each cycle of the Instructional Series, the BOP has sponsored a networking event providing IS graduating participants and other regional EBEs an opportunity to engage with instructors, primes, and fellow peers. For subcontractor IS graduates, this has provided an opportunity for them to engage with prime contractors and other industry leaders who can become contacts to help generate or become connections to new business opportunities.

Two events were successfully held over the past fiscal year: A networking event in the Rochester City Hall Atrium on July 31, 2017 which drew a mixed total of about 50 EBEs, primes and business support services; and another on January 24, 2018 at Henry Hudson School 28 with a total attendance of about 60. At the latter event, the architects for Schools 2, 4, 6 and 10 presented a design overview of their respective upcoming Phase 2c projects.

Media

The breadth of the RSMP encompasses a large swath of the Rochester population, making dissemination of timely and accurate information a priority. The BOP plays a significant role initiating the distribution of that information. Various media outlets were utilized, including: television, newspapers, social media and radio. Initiating proactive coverage of profile-building events and project progress is part of the pre-emptive strategy to mitigate and overcome negative press and unexpected crisis developments.

LandNPR continues to perform as a Savin consultant charged with assisting the coordination and execution of RSMP Outreach and Marketing initiatives. Specifically, LandNPR serves as the liaison to local association groups whose neighborhoods include Phase II Schools to keep them informed of project developments and receive any concerns community residents may have regarding construction impacts. Additionally, La'Lew Public Relations assists LandNPR by creating RSMP press releases and handling coordination with various news media outlets. Finally, Press Clique is assigned to post RSMP social media communications. LandNPR, La'Lew, and Press Clique are all Small Business Enterprises (SBEs).

During the past year, the BOP was able to generate RSMP press coverage that included newspaper and website articles in the Democrat & Chronicle, The City, Minority Reporter, The Challenger, Open Mic Rochester and El Mensajero (Spanish). Radio interviews occurred on 91.5 WXXI-FM, 92.5 WBEE-FM and Poder 97.1 WEPL-FM (Spanish). Television reporter segments featuring special Program events and construction updates were broadcast on WROC-8 (3 separate pieces), WHEC-10 and WHAM-13.

Contractor Outreach

With almost half of the Phase II projects being bid out to prime contractors during the fiscal year, BOP worked in conjunction with the Independent Compliance Officer to recruit and inform certified EBEs for subcontractor opportunities. Enhancements to the BOP database allow for better identification of EBEs according to their trade codes and certification status to assist in broader and more even recruitment of diverse subcontractors to enable Primes to meet their inclusion goals on projects. Through February 2018, these efforts have contributed towards M/W/D/SBE diversity compliance rates averaging just under 50% for all contracts awarded by the RJSCB.

Diversity Plan Compliance

RSMP has not only met, but exceeded its EBE business utilization goals for most diversity categories. The following charts and maps show progress toward our business utilization and workforce participation goals.

Businesses Participation Utilization

Total Program Goal of Minority and Women – 33%

Actual Achievement to Date – 47%

Certification	RSMP Phase 2 Total Contract Value	EBE Total Contract Value	Actual Achievement	Goal
MBE Firms	\$127,928,963	\$37,237,297	29.11%	17%
WBE Firms	\$127,928,963	\$15,314,926	11.97%	10%
SBE Firms	\$127,928,963	\$4,749,739	3.71%	3%
DBE Firms	\$127,928,963	\$3,021,571	2.36%	3%
Total EBE Contract Value	\$127,928,963	\$60,323,533	47%	33%

Source: March 2018 Phase II Compliance Report from ICO.

Workforce Participation

Total Program Goal for Minority Workers – 22%

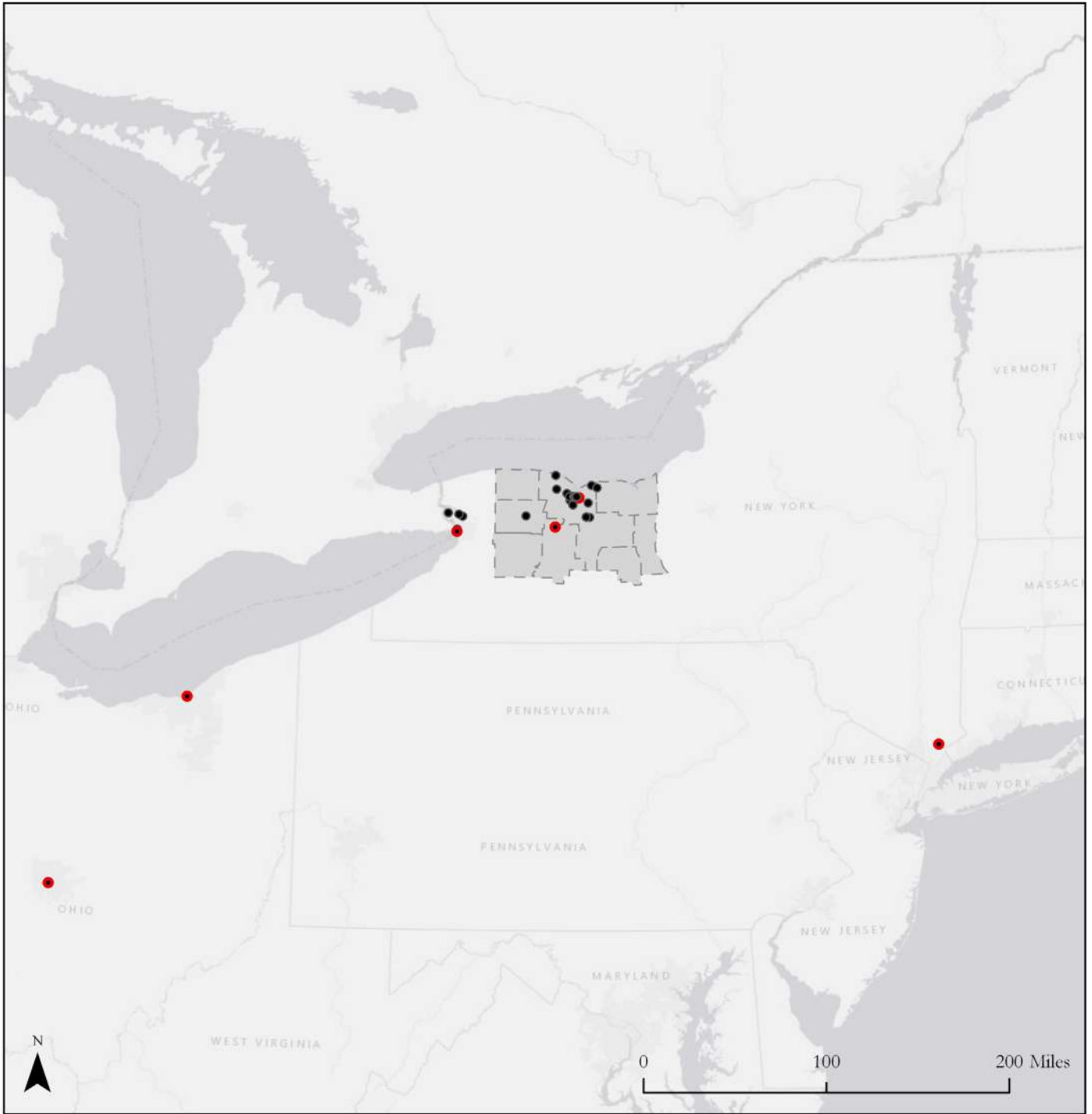
Actual Minority Workers Achievement to Date – 29.51%

Total Program Goal for Women Workers – 8%

Actual Women Workers Achievement to Date – 7.30%

Category	Total Work Hours	Actual Achievement	Goal
Minority Work Hours	133,251.55	29.51%	22%
Non-Minority Women	32,980.93	7.30%	8%
Total EBE Contract Value	166,232.48	36.81%	30%

Source: March 2018 Phase II Compliance Report from ICO.

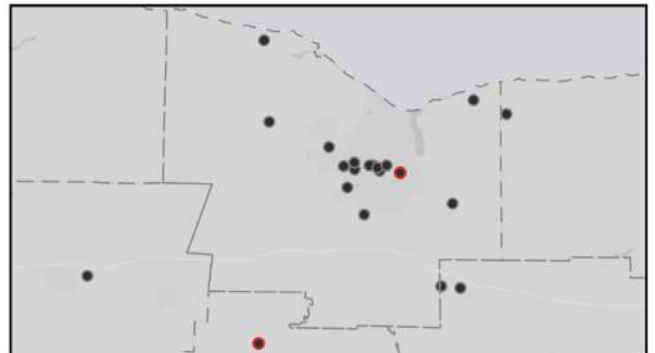


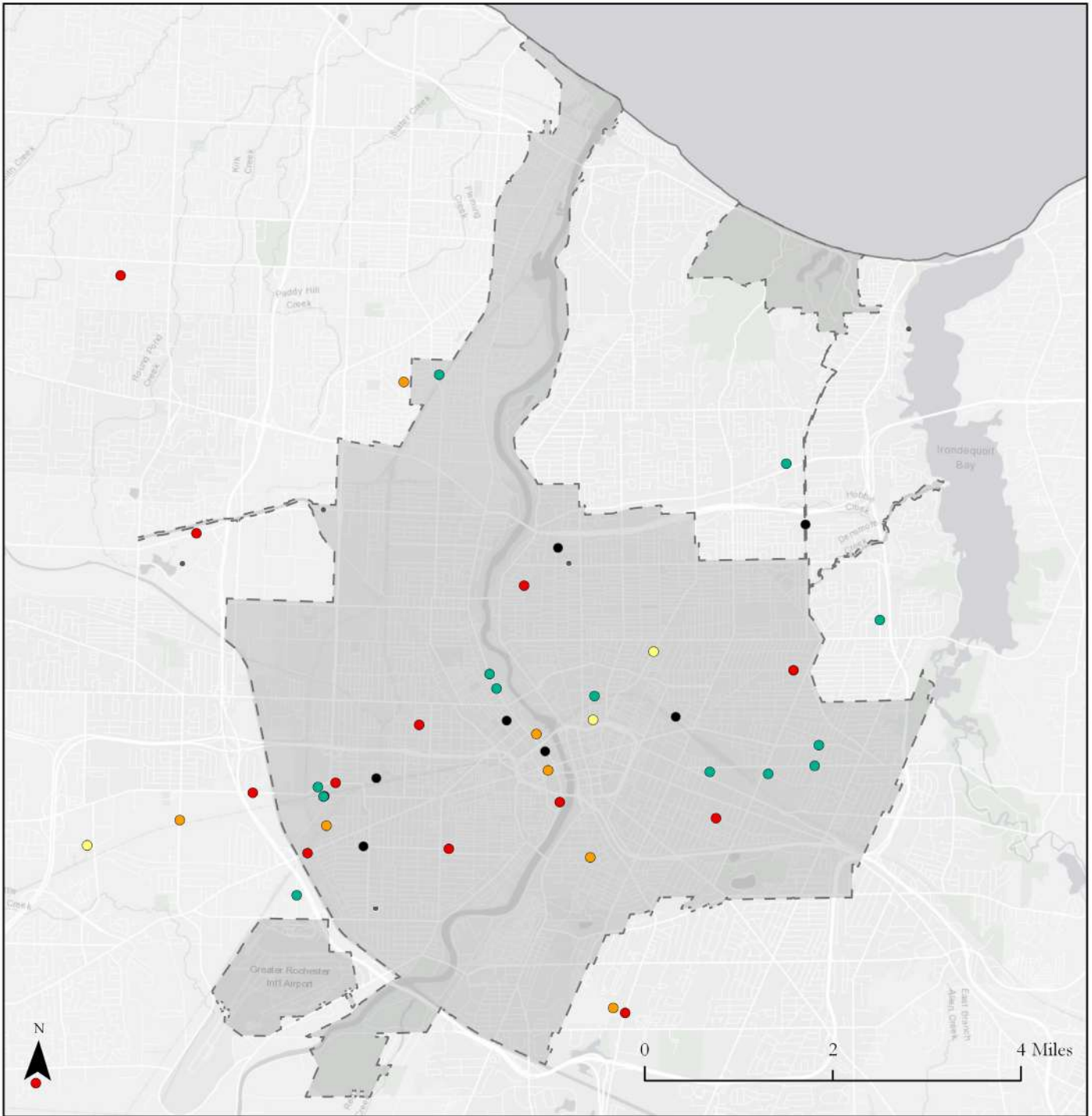
**RSMP Phase 2:
All Prime Contracts**

Legend:

- Prime Contractor
- EBE Prime Contractor
- COMIDA Nine-County Region

*Sources: ESD Certifications / Baker Tilly (I.C.O.)





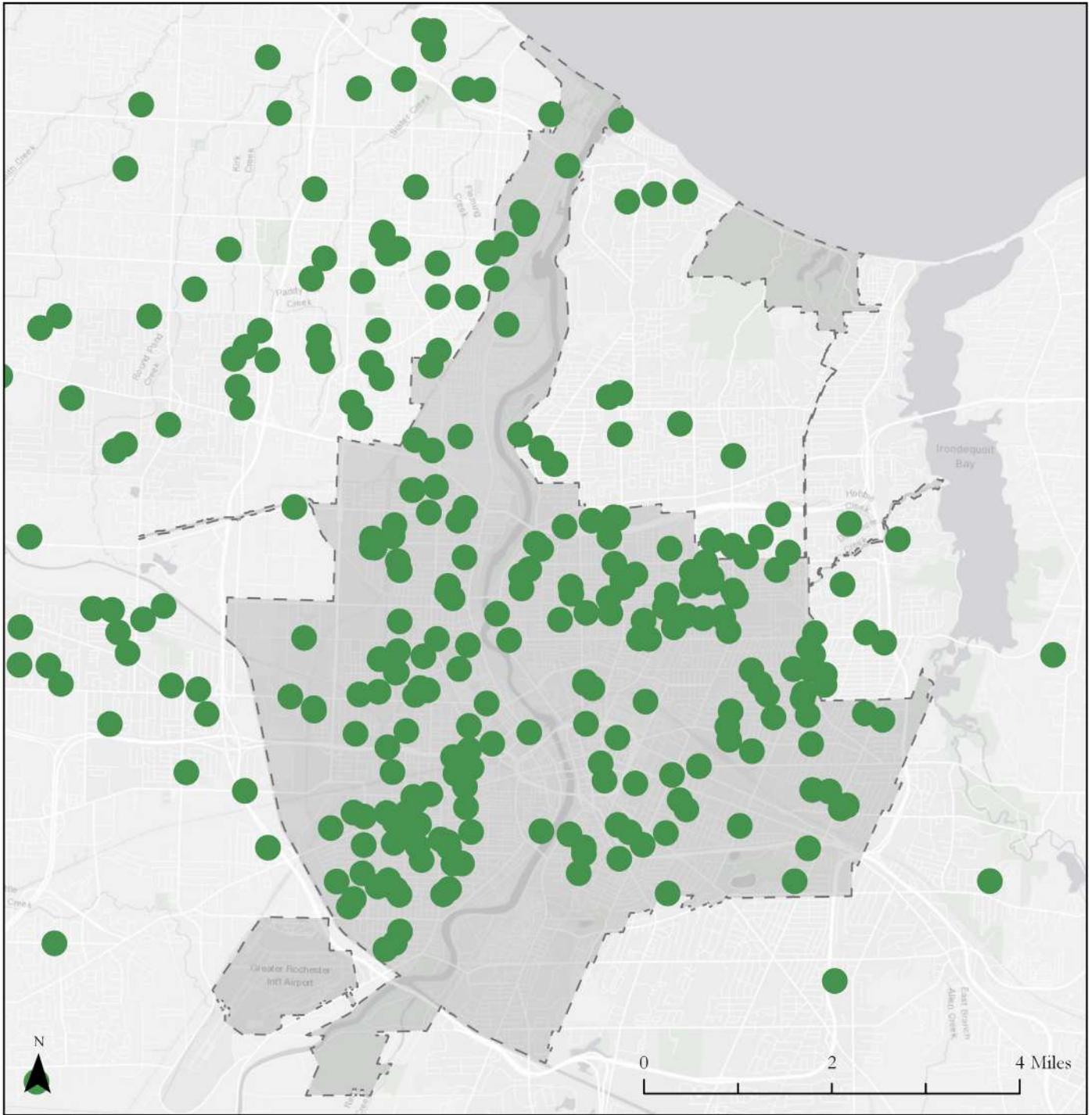
RSMP Phase 2:
Diversity Plan Eligible Business Enterprises (EBEs)* Contracts to Date

Legend:

- Multiple EBE Contracts
- MBE
- WBE
- DBE
- SBE
- Majority Subcontractor
- ▭ City of Rochester

*Sources: ESD Certifications / Baker Tilly (I.C.O.)



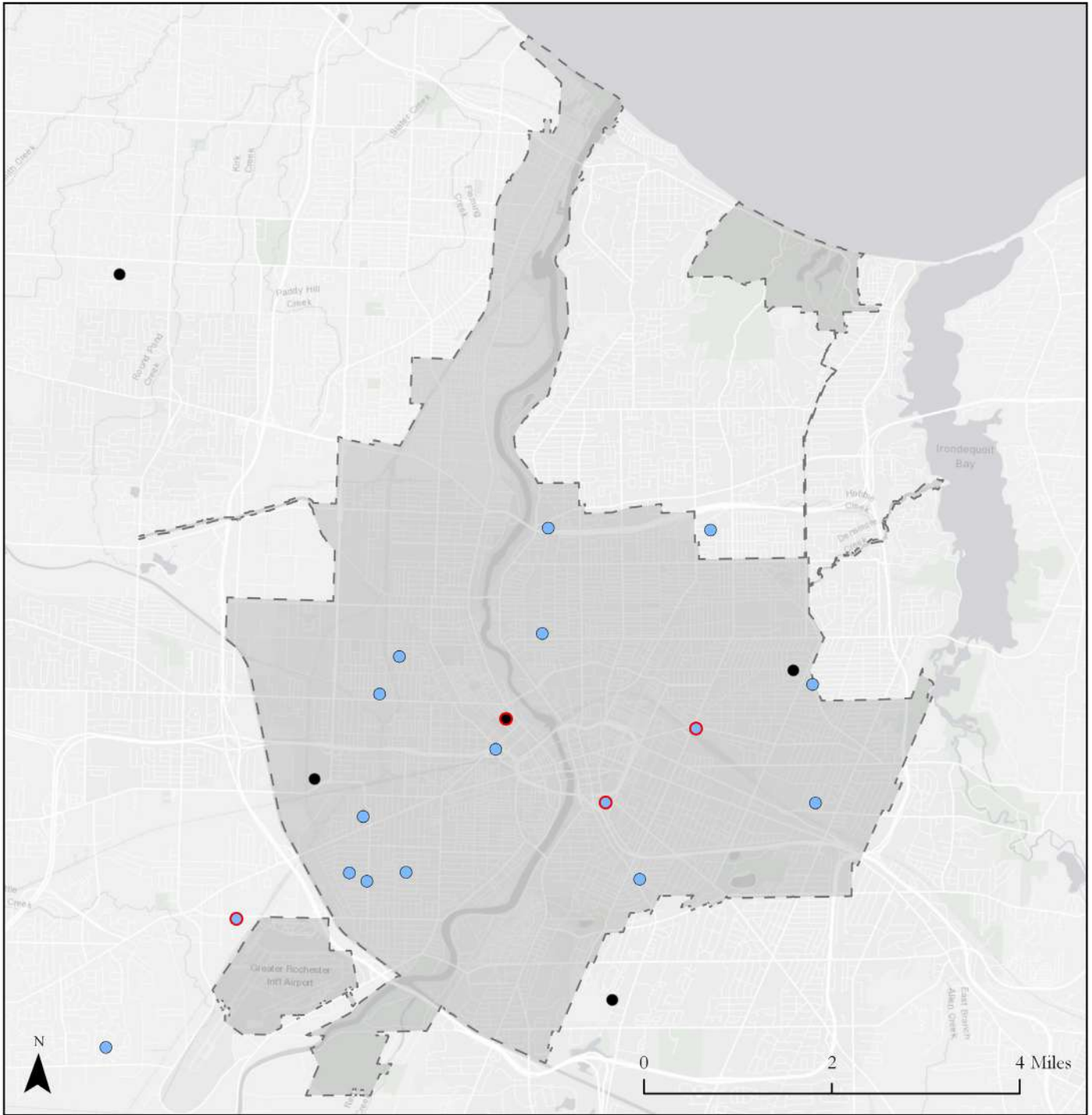


RSMP Phase 2:
Diversity Plan Workforce Development
Minority Residents* on Contracts to Date

Legend:
 City of Rochester Actual Minority Workers to Date

*Source: Baker Tilly (I.C.O. Certified Payrolls)





RSMP Phase 2:
BOP Instructional Series Participants

Legend:

- BOP Participant
- BOP Participant & BOP Mentor/Protege
- BOP Participant Awarded Phase 2 Contract
- Awarded Contract & Mentor/Protege
- City of Rochester

*Source: BOP Database



(Diversity Plan Compliance, cont.)

PLA Litigation

Rochester Careers in Construction, Inc., et al. v. Rochester Joint Schools Construction Board, et al. (Sup. Ct., Monroe County) is an Article 78 proceeding commenced in August 2016 by local labor organizations against the RJSCB and its board members challenging the RJSCB's determination to not adopt a project labor agreement for the Phase II Program. The relief sought by the petitioners is an order requiring the RJSCB to implement a project labor agreement for the Phase II Program. At the outset of the litigation, the court issued an ex parte temporary restraining order prohibiting the RJSCB from proceeding with the Phase II Program without a project labor agreement, which temporary restraining order was subsequently modified to allow the RJSCB to perform all Phase II Program pre-construction activities and award construction contracts for that portion of the Phase II Project that is to be financed with the Series 2017 Bonds. The petitioners have since withdrawn their preliminary injunction application and the temporary restraining order has been vacated.

Financial Audit

The RJSCB engaged an independent audit firm to conduct a financial audit and opine on the RJSCB's financial statements for the fiscal year ending June 30, 2016. The audit resulted in a clean opinion by the outside auditors with no material weaknesses or significant deficiencies. The RJSCB has engaged the audit firm for a financial audit and to opine on the RJSCB's financial statements for the fiscal year ending June 30, 2017.

Project Bids and other Contract Awards

In 2016, the RJSCB procured Furniture, Fixtures, & Equipment (FF&E) for the Phase II project at Monroe High School. That strategy allowed the RJSCB to take advantage of previous year bid pricing.

The RJSCB engaged the services of a moving company to perform the physical moves during the summer 2016, associated with the School 12 students' move back to their home school and the School 7 relocation into swing space at Jefferson. The RJSCB has also engaged a mover for Summer 2017 for the Children's School of Rochester/School 1 project.

Other Requests for Proposals and Bids

In order to implement the projects included in the Phase II Master Plan, starting in 2016 and as necessary throughout the duration of the RSMP, the RJSCB engaged all of the professional service firms and construction contractors necessary to carry out the work of Phase II. This includes but is not limited to: Legal Services, Independent Compliance Officer, Architects, Construction Managers, Commissioning Consultants, Food Service Consultants, Contractors, Special Inspections and Testing, Environmental Inspections and Testing, Moving Services, etc.

MBE/WBE/SBE/DBE Business Utilization and EEO Compliance

In Phase II, the goal for Business Utilization has been increased to a combined total of 33% for M/W/S/DBE. The goals for Minority and Women workforce participation (EEO) have also been increased to 22% and 8% respectively

Equal Opportunity

As required by the enabling statute, following an extensive RFP and interview process, the RJSCB identified an Independent Compliance Officer (“ICO”) in August of 2010. The ICO is a non-voting member of the Board by statute.

Working with the ICO and the Program Manager, the RJSCB established a Preliminary Diversity Plan for the Program which established the Minority and Women Business Utilization goals and Work Force Participation (EEO) goals Phase II of the RSMP.

All firms and individuals seeking to participate in the RSMP should be prepared to acknowledge their understanding and support of this social policy and will be expected to demonstrate efforts to solicit the participation of such individuals as partners, associates, and/or employees. In this regard, the RJSCB expects program participants to undertake or continue existing programs to ensure that minority group members and women are afforded equal employment opportunities without discrimination.

The ICO is responsible for all compliance issues related to the Program. The ICO will identify and confirm a subcontractor’s certification(s), track the Prime contractor’s compliance for both Business Utilization and Workforce Participation, collect reporting data and provide performance reports to the Board on a monthly basis, provide support to M/W/S/DBEs, verify payments to subcontractors, and provide program outreach among other tasks.

In November of 2013, following an RFP and interview process, the RJSCB engaged a third party consultant to review the Program records kept by the then-Phase I ICO, Landon & Rian. The consultant, Northeast Preconstruction Ventures Inc. (“NPV”), immediately engaged and began an audit of the ICO records for Phase I of the RSMP.

The audit concentrated on the completeness and accuracy of records kept and maintained by the ICO, the effectiveness of the ICO’s internal controls, and the subsequent diversity reporting by the ICO to the RJSCB. NPV’s work revealed several material weaknesses in the ICO’s controls and contains numerous recommendations for eliminating the risk and recurrence of these deficiencies.

The RJSCB is committed to the successful implementation of the Diversity Plan through improved performance of the ICO in a manner consistent with the independence of the ICO required by the Legislation. In January 2014, the RJSCB awarded the Phase I ICO services contract to Baker Tilly Virchow Krause LLP (Baker Tilly), and in August 2016 it awarded the Phase II ICO services contract to Baker Tilly.

Baker Tilly's Role

When a low bidder is identified, Baker Tilly staff examine the bid to ensure that all required documentation is provided, and the Prime Contractor (PC) is educated on the compliance obligations. This includes:

- Ensuring the documentation includes the EBE Utilization Plan (DP-1), EBE Assurance Statement, Promise of Non-Discrimination Checklist and Good Faith Efforts Checklist.
- Verify that the EBE subs listed on the DP-1 have been contacted by the PC in regard to the proposed work scope.
- Verify that the EBE subs are certified for both the work scope and respective EBE goal proposed by the Prime.
- Ensure that if a sub will act as a supplier or broker, the PC understands the correct credit to be received.
- Ensure that Baker Tilly has an understanding of each sub's role, and that each sub is performing a commercially useful function. If there are any issues with the proposed goals or quality of the documentation received, Baker Tilly contacts the PC.
- Offering assistance to any PC having difficulty finding EBE subs in order to meet the goals.
- Assist contractors by providing them electronic templates for the compliance forms, to ensure that the forms are completed in a neat and legible manner.
- Issuing recommendation letters for firms that are determined to have made a good faith effort in meeting all of the business participation goals.
- Once a firm has been awarded a contract, Baker Tilly requests copies of the Letter of Intent to Perform (DP-2) and executed sub-contracts for each EBE sub in order to verify that the PC is starting to fulfill their interest to use the sub.

Ongoing Monitoring Procedures

- On a monthly basis, Baker Tilly collects copies of DP-3s, DP-3As, certified payrolls, proof of payment to EBE subs (and corresponding invoices) and proof of payment toward the RCIC fund. Baker Tilly uses the certified payroll to validate the hours reported on the DP-3 and the proof of payment (with the corresponding invoices) to sub-contracts used to validate the fulfillment of the sub-contract.
- Perform independent verification procedures, which include sending letters to EBE subs to confirm the balance they were paid by a PC as of a specified date, and sending letters to employees to validate their address and hours worked.
- Review the DP-3As for changes to the use of EBE subs, to ensure that if any new sub-contracts are initiated, the sub is certified for both the work scope and respective EBE goal proposed by the PC, and that they will be serving a commercially useful function.
- Utilize the cost reports and payment applications to determine the list of PCs and subs who were active in a given month. Using this information, Baker Tilly builds a monthly checklist of documents that are required. The checklist database allows Baker Tilly to track problems with compliance documents as well as follow up items. Any issues with compliance documents or indications of compliance issues are immediately investigated.
- Provide all PCs with access to a digital library on GoFileRoom to ensure that they have an efficient means of providing Baker Tilly with the compliance documents for their firm and their subs on a timely basis. The system allows Baker Tilly to easily review documents, share documents among interested parties and store documents long-term.
- Review reporting of credit for each PC, and ensure that the EBE credit only includes firms that are certified, and that are performing a role that is eligible for credit. We have ensured that signed and notarized copies of the RSMP's SBE Certification Form is stored electronically on GoFileRoom for all SBE firms that are claiming eligibility for credit.

2016-17 Fiscal Year in Review

Legislation:

The Rochester School Facilities Modernization Program Act, constituting Chapter 416 of the 2007 Laws of New York and Chapter 533 of the 2014 Laws of New York (collectively the “Rochester Schools Act”), established the Rochester Joint Schools Construction Board (RJSCB or Board).

The RJSCB, under Section 10 of the Rochester Schools Act, is required to retain the services of an Independent Program Manager to implement Phase II of the Program. In December 2015, the RJSCB selected Savin Engineers, P.C., a New York professional corporation, as its independent program manager (the Program Manager).

The RJSCB, pursuant to the Rochester Schools Act, is also required to retain the services of an Independent Compliance Officer/firm (the ICO) to assist the Board with compliance monitoring, data tracking and verification, reporting and community outreach services. In October 2016, the RJSCB retained the firm Baker Tilly Virchow Krause as ICO to examine and monitor the implementation of the RSMP Phase II Diversity Plan, and to collect and review monthly data, to determine whether diversity workforce and business goals are being met each month and at completion of the Phase II program. Professional service firms and contractors are required to submit RSMP forms or certified payroll transcripts that summarize the workforce breakdown in terms of race and gender.

In July 2016, the Governor of the State of New York signed an amendment to the Phase 2 legislation (Chapter 92 of the Laws of 2016) authorizing two multi-year cost allowances in a five-year period for eight Phase 2 projects for the computation of Building Aid.

In July 2016, the Governor of the State of New York signed into law an amendment to the Phase 2 special legislation that authorized a doubling of the Building Aid Maximum Cost Allowance (MCA). The effective results were strategic and profound:

- The doubled MCA extends over a 10-year period, compared to the typical 5-year reset for a single MCA that SED would ordinarily provide for the eight (8) Elementary Schools approved for Phase 2.
- The doubled MCA also allows complete reconstruction Projects to occur, rather than the disruptions and inefficiencies of spreading the already overdue work scope across multiple phases.
- Equally important, the overall RSMP Phase 2 total funding remains the \$435-million as originally approved in the enabling special legislation.

Financing:

The Rochester Schools Act requires the RJSCB and the District to compare the financing available for the RSMP through the County of Monroe Industrial Development Agency (COMIDA) with the financing available through the Dormitory Authority of the State of New York (DASNY), and employ the financing mechanism that will result in the lowest cost to taxpayers of the City and State.

The RJSCB requested that COMIDA provide financing for the Phase II Program and adopted a resolution in December 2016 authorizing the issuance of up to \$435 million in tax-exempt bonds to accomplish the purposes of the Rochester Schools Act. COMIDA has previously issued all tax-exempt bonds for the RSMP on behalf of the City, the School District and the RJSCB, for the Phase I projects authorized under the Rochester Schools Act, and is expected to issue tax-exempt bonds for the Phase II projects as well.

Two public hearings were held by COMIDA in November and December 2016 concerning the issuance of the tax-exempt bonds for the Phase II projects.

The cash flow estimates provided by the Program Manager for Phase II suggest three tranches of RSMP Phase II COMIDA Tax-Exempt bond financing. (A tranche is one part or division of a larger unit.)

- Tranche 1: 2017 Series (combining 2017A and 2017B series) for \$150 million to finance expenses until the 2nd quarter of 2018;
- Tranche 2: 2018 Series for \$225 million to finance expenses from 3rd quarter 2018 to fourth quarter 2019; and
- Tranche 3: 2020 Series for \$60 million to finance expenses from first quarter of 2020 to end of the program.

The 2017 Series 1 Bonds are expected to pay out the \$32M City BAN, finance all of Phase 2a design and construction that have been granted NYSED approval (including a roofing project at East High School), the design and construction of the 2b projects, and early planning of the 2c and 2d projects.

SEQRA:

The RJSCB declared its intent to serve as State Environmental Quality Review Act (SEQRA) Lead Agency for the Phase II Master Plan in February 2016 and subsequently confirmed its Lead Agency status in March 2016.

The RJSCB, through its SEQRA consultant, has conferred with the New York State Office of Parks, Recreation and Historic Preservation (SHPO) and with other involved or interested agencies to provide reasons supporting the SEQRA Negative Declaration, and determined that the Action, as proposed, will not result in any significant adverse environmental impacts. In addition, the RJSCB has incorporated comments and correspondence received from involved and interested agencies to identify potentially significant adverse impacts in this Type 1 Action that needed implementation of mitigation measures. Determination of significance for the Phase 2 SEQRA process was completed in June 2016.

2017-18 Fiscal Year in Review

Special Legislation:

The Rochester School Facilities Modernization Program Act (RSMP), constituting Chapter 416 of the 2007 Laws of New York and Chapter 533 of the 2014 Laws of New York (collectively the “Rochester Schools Act”), established the Rochester Joint Schools Construction Board (RJSCB or Board). The RJSCB accordingly serves as agent for both the City of Rochester, and the Rochester City School District.

The RJSCB, under Section 10 of the Rochester Schools Act, is required to retain the services of an Independent Program Manager to implement Phase II of the Program. In December 2015, the RJSCB selected Savin Engineers, P.C. a New York professional corporation with offices in Rochester, as its independent program manager (the Program Manager).

The RJSCB, pursuant to the Rochester Schools Act, is also required to retain the services of an Independent Compliance Officer/firm (the ICO) to assist the Board with compliance monitoring, data tracking and verification, reporting and community outreach services. In August 2016, the RJSCB retained the firm Baker Tilly Virchow Krause as ICO for the RSMP Phase II to examine and monitor the implementation of the approved Diversity Plan, and to collect and review confidential data, to determine whether workforce and business diversity goals are being met each month and at completion of the Phase II program. Professional service firms and contractors are required to submit RSMP forms or certified payroll transcripts on a monthly basis that summarize the workforce breakdown in terms of race and gender.

In July 2016, the Governor of the State of New York signed an amendment to the Phase II legislation (Chapter 92 of the Laws of 2016) authorizing two multi-year maximum cost allowances (or, MCA's) extending over a ten (10) -year period for the eight Phase II elementary school projects for the computation of Building Aid reimbursement not to exceed 98% of all eligible costs. The net results of effectively ‘doubling’ the MCA were strategic and profound in addressing the existing elementary schools that were grossly under-sized for the enrollment, and physically obsolete:

- The doubled MCA extends over a 10-year period, compared to the typical 5-year reset for a single MCA that SED would ordinarily provide for the eight (8) Elementary Schools approved for Phase II.
- The doubled MCA also allows complete reconstruction projects to occur, rather than the disruptions and inefficiencies of spreading the already overdue work scope across multiple phases to achieve comprehensive and equitable learning facilities for the 21st century.
- Equally important, the overall RSMP Phase II total funding remains the \$435-million as originally approved in the enabling special legislation.

SEQRA:

The RJSCB declared its intent to serve as State Environmental Quality Review Act (SEQRA) Lead Agency for the Phase II Strategic Plan in February 2016 and subsequently confirmed its Lead Agency status in March 2016. The RJSCB, through its SEQRA consultant, has conferred with the New York State Office of Parks, Recreation and Historic Preservation (SHPO) and with other involved or interested agencies to provide reasons supporting the SEQRA Negative Declaration, and determined that the Action, as proposed, will not result in any significant adverse environmental impacts. In addition, the RJSCB has incorporated comments and correspondence received from involved and interested agencies to address any potentially significant adverse impacts in this Type 1 Action that needed implementation of mitigation measures. The final determination of no significant adverse impacts for the Phase II SEQRA process was completed in June 2016.

Financing:

The Rochester Schools Act requires the RJSCB and the District to compare the financing available for the RSMP through the County of Monroe Industrial Development Agency (COMIDA), with the financing available through the Dormitory Authority of the State of New York (DASNY), and employ the financing mechanism that will result in the lowest cost to taxpayers of the City and State.

The comparative analysis concluded and the RJSCB requested that COMIDA provide financing for the Phase II Program. The associated resolution was adopted in December 2016, authorizing the issuance of up to \$435 million in tax-exempt bonds to accomplish the purposes of the Rochester Schools Act.

COMIDA has previously issued all tax-exempt bonds for the RSMP Phase I projects authorized under Rochester Schools Act

on behalf of the City, the School District and the RJSCB, for the Phase I projects authorized under the Rochester Schools Act and is expected to issue tax-exempt bonds for the Phase II projects as well in a series of tranches.

Two public hearings were held by COMIDA in November and December 2016 concerning the issuance of the tax-exempt bonds for the Phase II projects.

The cash flow estimates provided by the Program Manager for Phase II suggest three tranches of RSMP Phase II COMIDA Tax-Exempt bond financing. (A tranche is one part or division of a larger unit.)

- Tranche 1: 2017 Series (combining 2017A and 2017B series) for \$150 million to finance expenses until the 2nd quarter of 2018;
- Tranche 2: 2018 Series for \$225 million to finance expenses from 3rd quarter 2018 to fourth quarter 2019; and
- Tranche 3: 2020 Series for \$60 million to finance expenses from first quarter of 2020 to end of the program.

The 2017 Series 1 Bonds have fully reimbursed the \$32M bond anticipation note (BAN) provided by the City of Rochester, and the proceeds all of Phase 2a design and construction projects that have been granted NYSED approval (including a roofing project at East High School), the design and construction of the 2b projects, and most of the pre-construction phases for the 2c and 2d projects.

Going Forward 2018-2019

The Summer 2018 will be the busiest period of activity ever for the RSMP during Phase I or II. In addition to the six (6) projects that will be completed and returned for the start of the school year in September 2018, all of the remaining projects are either in construction, bidding, or design. The important points being the spirit of active collaboration is not just being maintained, but actually implemented in an effective on schedule/on budget manner despite the changing requests of the RCSD as new/unforeseen events have arisen. For convenient reference, the overall status of the RSMP Phase II projects are as follows:

- **Occupancy for September 2018:**
 - Monroe High School Campus
 - Grissom School 7
 - Spencer School 16
 - Dr. Freddie Thomas Learning Center
 - School Without Walls
 - Community School of Rochester (former School 1)

 - **Construction Continues:**
 - Edison Campus (complete Summer 2019)

 - **Construction Contracts Awarded:**
 - Clara Barton School 2 (May 2018)
 - Dag Hammarskjold School 6 (May 2018)
 - George Forbes School 4 (5 June 2018)
 - East Lower/Upper Campus (August 2018)*
 - Cooper School 10 (September 2018)*
- *Note, Scheduled for SED Final Approval Reviews
- **Design Phase Underway:**
 - Flower City School 30/54

The RJSCB anticipates the second tranche of Capital Bonds will be sold in July 2018, and the final tranche late in 2019 to complete the program. The 'draft' Special Legislation for the RSMP Phase III has been initiated, with the strong likelihood that the sponsor will submit the proposition before the end of the legislative session in June 2018. The Phases III and IV could extend the overall RSMP 'transformation' of the RCSD Schools over 2 decades, totaling up to \$1.7 billion, as the largest capital program in the history of the City of Rochester, as well as all of Upstate New York.

Architect and Construction Manager Assignments

Individual Project Architect and Construction Manager Assignments, Phase I

School Project	Architect	Construction Manager
School 5	Young + Wright Architectural	The Pike Company
School 12	SEI Design Group	The Pike Company
School 17	SWBR Architects	The Pike Company
School 28	LaBella Associates	LeChase Construction
School 50	Clark Patterson Lee	The Pike Company
School 58	JCJ Architecture	LeChase Construction
Charlotte High School	CJS Architects	Campus Construction Group
Franklin High School	Young + Wright Architectural	Campus Construction Group
East High School	Cannon Design	LPCiminelli, Inc.
Edison High School	LaBella Associates	LPCiminelli, Inc.
Monroe High School	CJS Architects	Campus Construction Group
Jefferson High School	SEI Design Group	n/a

Individual Project Architect and Construction Manager Assignments, Phase II to date

School Project	Architect	Construction Manager
Monroe High School	CJS Architects	The Pike Company
School 7	SEI Design Group	LeChase Construction
School 16	SWBR Architects	Buffalo Construction Consultants
East High School	Cannon Design	The Pike Company
Dr. Freddie Thomas	Watts Architecture & Engineering	The Pike Company
School Without Walls	Clark Patterson Lee	The Pike Company
School 1/15	Moody Nolan	The Pike Company
Edison High School	LaBella Associates	Buffalo Construction Consultants
School 4	CJS Architects	DiMarco Constructors
School 2	Clark Patterson Lee	The Pike Company
School 6	Moody Nolan	Buffalo Construction Consultants
School 10	SEI Design Group	LeChase Construction
School 30/54	LaBella Associates	Buffalo Construction Consultants

Appendix A

Table of Professional Service Firms, Vendors, and Contractors- Phase I

Vendors	Description of Services	Firm Location
Program-Wide		
Clark Patterson Lee	SEQRA Consulting Service	Rochester-Based
Bergmann Associates	Program Assessment	Rochester-Based
Bergmann Associates	Program Assessment	Rochester-Based
NPV Inc.	Third Party Review Services	Rochester-Based
Kaizen Foodservice	Food Service Consulting	Out of Area
Millennium Strategies	District-wide Technology	Out of Area
SWBR Architects	Architectural Master Planning	Rochester-Based
Wendel Energy Services	Energy Consultant	Buffalo-Based
Harter Secrest	Monthly Project Work	Rochester-Based
PHASE 1A Architects and CMs		
CJS Architects	Architect Services - Charlotte	Rochester-Based
Clark Patterson Lee	Architect Services - School 50	Rochester-Based
JCJ Architecture	Architect Services - School 58	Out of Area
LaBella Associates, P.C.	Architect Services - School 28	Rochester-Based
SWBR Architects	Architect Services - School 17	Rochester-Based
Young + Wright Architects	Architect Services - Franklin + Aud	Buffalo-Based
LeChase Construction	CM Services (28 and 58)	Rochester-Based
The Pike Company	CM Services (17 and 50)	Rochester-Based
Campus Construction	CM Servs (Charlotte & Franklin)	Rochester-Based
Other Professional Services		
Seeler Engineering	PLA Study	Rochester-Based
LaBella Associates	Comm. Agent (17, 58, Monroe)	Rochester-Based
Hunt Engineers	Comm. Agent (28, 50, Edison)	Rochester-Based
Erdman Anthony	Comm Agent (5, 12, Char, Frank)	Rochester-Based
Landon & Rian	ICO (Stage 2)	Rochester-Based
Freed Maxick	Audit	Rochester-Based
Baker Tilly	ICO (balance of Phase 1)	Out of Area
OSO Inc.	Env. Monitoring (1A)	Rochester-Based
OSO Inc.	Env. Monitoring (1B)	Rochester-Based
Lawley Services	Ins. & Bond Review	Rochester-Based
Main-Ford General Supply	Kitchen Equipment (1a)	Rochester-Based
Main-Ford General Supply	Kitchen Equipment (1b)	Rochester-Based
Charlotte Appliance	Small Appliances	Rochester-Based
Appliance Associates of Buffalo	Small Appliances (1b)	Buffalo-Based
Buffalo Hotel Supply	Serving line @ Franklin Swing Space	Buffalo-Based
zSpace Inc.	STEM Lab Workstations	Out of Area
School Specialty	FF&E (17/50/Char)	Rochester-Based
Facilities Equip & Services	FF&E (17/50/Char)	Rochester-Based

FM Resources	FF&E (17/50/Char)	Rochester-Based
Hertz Furniture	FF&E (17/50/Char)	Out of Area
ProMaxima	Fitness Equipment	Out of Area
School Specialty	FF&E (5, 28, 58, Edison)	Rochester-Based
Facilities Equip & Services	FF&E (5, 28, 58, Edison)	Rochester-Based
FM Resources / Office	FF&E (5, 28, 58, Edison)	Rochester-Based
Hertz Furniture	FF&E (5, 28, 58, Edison)	Out of Area
Uline	mobile organizer school 58	Out of Area
Crowd control warehouse	58 security barriers	Out of Area
Meadows Office Furn	FF&E	Rochester-Based
JSJ/Sedgwick Business Int.	FF&E	Rochester-Based
Quality Office / Krueger	FF&E	Rochester-Based
Hertz Furniture	AV Carts	Out of Area
School Specialty	Butcher Block Tables	Rochester-Based
Professional Furn & Eq.	Mezzanine Seating	Out of Area
School Specialty	wooden lockers	Rochester-Based
Accent Woodworks	IT cabinets	Rochester-Based
FES	School 58 Bleachers	Rochester-Based
SJB Services	Special Inspections / Testing (1A)	Rochester-Based
SJB Services	Special Inspections / Testing (1B)	Rochester-Based
JT Securities	Security Services (17/50/58)	Rochester-Based
AP Safety and Security	Security Services (5/28/Edison)	Rochester-Based
AP Safety and Security	Security Services (School 12) Monroe extension	Rochester-Based
Lafayette Storage & Moving	Moving Services	Rochester-Based
FM Office Express	Moving Services	Rochester-Based
Corrigan Moving	Moving Services	Rochester-Based
MDI	Moving Services	Rochester-Based
CCP	Pre-Apprenticeship Program	Out of Area
Corrigan Moving	Moving Services 1B	Rochester-Based
Clark Moving	Moving Services 1B	Rochester-Based
FM Office Express / Merkle	Moving Services 1B	Rochester-Based
FM Office Express / Merkle	Moving Services 1c	Rochester-Based
Pacific Scientific Transport	Chemical Moves (Monroe)	Out of Area
Nickerson Corp	School 12 FF&E	Rochester-Based
FM Resources	School 12 FF&E	Rochester-Based
FES	School 12 FF&E	Rochester-Based
Hertz Furniture	School 12 FF&E	Out of Area
WB Mason	School 12 FF&E	Out of Area
FES	Additional FF&E School 12	Rochester-Based
Clark Moving	School 12 move	Rochester-Based
Vargas Associates	Move Manager	Rochester-Based
PHASE 1B Architects and CMs		
CJS Architects	Architect Services - Monroe	Rochester-Based
Young & Wright Architects	Architect Services - School 5	Buffalo-Based
LaBella Associates	Architect Services - Edison	Rochester-Based

SEI Design Group	Architect Services - School 12	Rochester-Based
Cannon Design	Architect Services - East	Buffalo-Based
SEI Design Group	Architect Services - Jefferson	Rochester-Based
Pike	CM Services - School 5 and 12	Rochester-Based
Campus	CM Services - Monroe	Rochester-Based
LPCiminelli	CM Services - East and Edison	Buffalo-Based

Construction Contracts

Hewitt Young Electric	DWT 1a	Rochester-Based
TEQ	Interactive White Boards	Out of Area
Ronco	Network Electronics	Rochester-Based
ICS Telecom	Handsets	Rochester-Based
Hewitt Young Electric	DWT 1b	Rochester-Based
Ronco	Interactive White Boards	Rochester-Based
Dyntek	Network Electronics	Out of Area
Frontrunner Networks	Handsets	Rochester-Based
Dyntek	Network Electronics	Out of Area
Frontrunner Networks	DWT - School 12 handsets	Rochester-Based
TEQ	Interactive White Boards	Out of Area
Day Automation	School 12 Building Controls	Rochester-Based
Day Automation	Monroe Building Controls	Rochester-Based
Day Automation	Monroe Access Controls	Rochester-Based
Day Automation	East (summer) Building Controls	Rochester-Based
Day Automation	East (summer) Access Controls	Rochester-Based
Day Automation	East (summer) additional Access Controls	Rochester-Based
Manning Squires Hennig	School 58 GC	Rochester-Based
Leo J. Roth	School 58 - Mech	Rochester-Based
Eastcoast Electric	School 58	Rochester-Based
M. A. Ferraulio	School 58 - Plum	Rochester-Based
Manning Squires Hennig	School 28	Rochester-Based
Bell Mechanical	School 28 - Mech	Rochester-Based
Nairy Mechanical	School 28 - Plumb	Rochester-Based
Kaplan Schmidt	School 28	Rochester-Based
Manning Squires Hennig	School 50	Rochester-Based
B&B Mechanical	School 50 - Mech	Rochester-Based
Eastcoast Electric	School 50	Rochester-Based
Thurston Dudek	School 50 - Plumb	Rochester-Based
Manning Squires Hennig	School 17	Rochester-Based
Testa Construction	School 17 - Clinic GC	Rochester-Based
M. A. Ferraulio	School 17 - Mech	Rochester-Based
Eastcoast Electric	School 17	Rochester-Based
M. A. Ferraulio	School 17 - Plumb	Rochester-Based
The Pike Company	Charlotte	Rochester-Based
M. A. Ferraulio	Charlotte - Mech	Rochester-Based
Concord Electric	Charlotte	Rochester-Based
Thurston Dudek	Charlotte - Plumb	Rochester-Based
The Pike Company	East	Rochester-Based
DiFiore Construction	East Field	Rochester-Based
Steve General	East - Summer Project	Rochester-Based

LeChase Construction	School 5	Rochester-Based
Bell Mechanical	School 5 - Mech	Rochester-Based
Kaplan Schmidt	School 5	Rochester-Based
Thurston Dudek	School 5 - Plumb	Rochester-Based
Steve General	School 5 - Roofing	Rochester-Based
The Pike Company	Edison	Rochester-Based
Landry Mechanical	Edison	Rochester-Based
MA Ferraulo	Edison-plumb	Rochester-Based
Hewitt Young	Edison	Rochester-Based
Steve General	Franklin Aud	Rochester-Based
Kaplan Schmidt	Franklin Aud	Rochester-Based
MA Ferraulo	Franklin Aud	Rochester-Based
Steve General	Franklin Aud Roof	Rochester-Based
Mark Cerrone Inc.	School 12 (abatement/demo)	Buffalo-Based
LeChase Construction	School 12	Rochester-Based
Landry Mechanical	School 12	Rochester-Based
Hewitt Young	School 12	Rochester-Based
MA Ferraulo	School 12	Rochester-Based
Steve General	Jefferson	Rochester-Based
MA Ferraulo	Jefferson	Rochester-Based
Manning Squires Hennig	Monroe	Rochester-Based
MA Ferraulo	Monroe - Mech	Rochester-Based
Thurston-Dudek	Monroe - Plum	Rochester-Based
Eastcoast Electric	Monroe	Rochester-Based
Cucchiara	Franklin	Rochester-Based
Leo J. Roth	Franklin - Mech	Rochester-Based
Kaplan Schmidt	Franklin	Rochester-Based
Thurston Dudek	Franklin	Rochester-Based

Table of Professional Service Firms, Vendors, and Contractors- Phase II

Vendor	Description of Services	Location
Program-Wide Professional Services		
Kaizen	Food Service Consultant	Out of Area
Lawley Services	Insurance Consulting Services	Buffalo-Based
Flood & Flood	Photography Services	Rochester-Based
Millennium Strategies	District Wide Technology Consultant	Out of Area
Baker Tilly	Independent Compliance Officer Services	Out of Area
Capital Market Advisors	Financial Services	Buffalo-Based
Citigroup Global Markets, Inc.	Financial Services	Out of Area
Erdmann Anthony	Commissioning Services	Rochester-Based
Foit-Albert	Design Standards Update Services	Buffalo-Based
Clark Patterson Lee	SEQRA Services	Rochester-Based
Freed Maxick	Audit Services	Rochester-Based
Moody's Investors Services, Inc.	Financial Services	Out of Area
Seeler Engineering	Project Labor Agreement Consulting	Rochester-Based
Harter Secrest & Emory	Legal Services	Rochester-Based

Bond Schoeneck & King	Legal Services	Rochester-Based
Harris Beach	Legal Services	Rochester-Based
Woods Oviatt Gilman	Legal Services	Rochester-Based
SWBR	Swing Space Study	Rochester-Based
LandNPR	Public Relations, BOP	Rochester-Based

Phase 2 Architects and CMs

CJS Architects	Monroe and School 4 Architect	Rochester-Based
Cannon Design	East High School Architect	Buffalo-Based
SEI Design	School 7 and School 10 Architect	Rochester-Based
Moody Nolan	School 1/15 and School 6 Architect	Out of Area
SWBR	School 16 Architect	Rochester-Based
Clark Patterson Lee	SWW and School 2 Architect	Rochester-Based
Watts Architecture	DFTLC Architect	Buffalo-Based
LaBella Associates	Edison and School 30/54 Architect	Rochester-Based
The Pike Co.	CM: Monroe, SWW, DFTLC, School 1/15, East	Rochester-Based
LeChase Construction, LLC	School 7 CM	Rochester-Based
Buffalo Construction Consultants	School 16, Edison CM	Buffalo-Based
DiMarco Constructors	School 4 CM	Rochester-Based

Other Professional Services

Dyntek Services Inc.	DWT Equipment	Out of Area
Troxell Communications	Security Equipment	Out of Area
Day Automation Services	Access Controls	Rochester-Based
Clark Moving & Storage	Move Services	Rochester-Based
FM Office Products	Move Services	Rochester-Based
Pacific Science Transport	Move Services	Rochester-Based
Corrigan Moving	Move Services	Rochester-Based
Executive Investigation	Security: School 1, School 6	Buffalo-Based
AP Safety	Security: Monroe, Schools 2, 4, 7, 10 & 16, East, SWW, DFT-LC	Rochester-Based
Armor Security	Security: Edison, School 30/54	Rochester-Based
Fisher Associates	Environmental Testing: School 1, Edison	Rochester-Based
LaBella Associates	Environmental Testing: Monroe	Rochester-Based
MEH Consulting	Environmental Testing: School 7	Rochester-Based
Ravi Engineering	Environmental Testing: Schools 6 and 10	Rochester-Based
Lu Engineering	Environmental Testing: Schools 2, 4, 30/54	Rochester-Based
Terracon Consultants, Inc.	MT&SI: School 1, Edison, DFTLC	Rochester-Based
SJB Services	MT&SI: Schools 7, 16, East, Monroe, SWW	Rochester-Based

Construction Contracts

Monroe 2a

	Role	
Manning Squires Hennig	General Contractor	Rochester-Based
MA Ferrauilo	Mechanical	Rochester-Based
Lloyd Mechanical	Plumbing	Rochester-Based
Eastcoast Electric	Electrical	Rochester-Based

Monroe 2b

Mark Cerrone	General Contractor, Demo & Abatement	Buffalo-Based
--------------	--------------------------------------	---------------

Manning Squires Hennig	General Contractor	Rochester-Based
John W. Danforth	Mechanical	Rochester-Based
Lloyd Mechanical	Plumbing	Rochester-Based
Concord Electric	Electrical	Rochester-Based

School 7

Fibertech Environmental	General Contractor, Demo & Abatement	Rochester-Based
DiPasquale Construction	General Contractor	Rochester-Based
John W. Danforth	Mechanical	Rochester-Based
MA Ferraulo	Plumbing	Rochester-Based
Eastcoast Electric	Electrical	Rochester-Based

School 16

Mark Cerrone	General Contractor, Demo & Abatement	Buffalo-Based
Manning Squires Hennig	General Contractor, Foundation & Steel	Rochester-Based
Manning Squires Hennig	General Contractor	Rochester-Based
MA Ferraulo	Mechanical	Rochester-Based
D.V. Brown	Plumbing	Rochester-Based
Eastcoast Electric	Electrical	Rochester-Based

East

Steve General	General Contractor, Roof & Abatement	Rochester-Based
Steve General	General Contractor	Rochester-Based
Manning Squires Hennig	General Contractor – Part B	Rochester-Based
John W. Danforth	Mechanical	Rochester-Based
Nairy Mechanical	Mechanical – Part B	Rochester-Based
MA Ferraulo	Plumbing	Rochester-Based
MA Ferraulo	Plumbing – Part B	Rochester-Based
Billitier Electric	Electrical	Rochester-Based
Concord Electric	Electrical – Part B	Rochester-Based

School Without Walls

Javen Construction	General Contractor	Rochester-Based
MA Ferraulo	Mechanical	Rochester-Based
MA Ferraulo	Plumbing	Rochester-Based
Eastcoast Electric	Electrical	Rochester-Based

School 1

Mark Cerrone	General Contractor, Demo & Abatement	Rochester-Based
Holdsworth Klimowski	General Contractor	Rochester-Based
MA Ferraulo	Mechanical	Rochester-Based
Thurston Dudek	Plumbing	Rochester-Based
Concord Electric	Electrical	Rochester-Based

Edison

Zoladz Construction	General Contractor, Site Work	Buffalo-Based
Elmer W. Davis	General Contractor, Roof	Rochester-Based
Manning Squires Hennig	General Contractor	Rochester-Based

Lloyd Mechanical	Mechanical	Rochester-Based
MA Ferraulo	Plumbing	Rochester-Based
Concord Electric	Electrical	Rochester-Based
Concord Electric	TV Studio	Rochester-Based

School 6

Steve General	General Contractor	Rochester-Based
Nairy Mechanical	Mechanical	Rochester-Based
D.V. Brown	Plumbing	Rochester-Based
Concord Electric	Electrical	Rochester-Based

School 2

DiPasquale Construction	General Contractor	Rochester-Based
John W. Danforth	Mechanical	Rochester-Based
MA Ferraulo	Plumbing	Rochester-Based
Concord Electric	Electrical	Rochester-Based

Appendix B

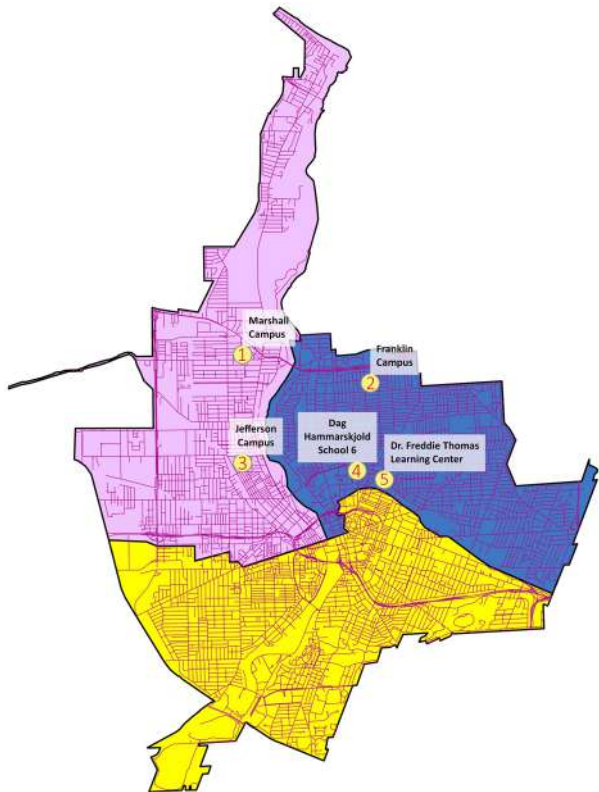
Swing Space Updates

The approved RSMP Phase II Strategic Plan had a ‘swing space’ contingency for the East Lower/Upper Campus project. The EPO (i.e., the University of Rochester), however, maintained its priority was to keep all of the students on-site during the Construction Phase. Accordingly, other minor adjustments have been made to accommodate students in the most appropriate swing space available as identified below.

Rochester Schools Phase II: Updated Master Schedule for Swing Spaces

Candidate Schools	Swing Space	Prelim Budget	2016		2017		2018		2019		2020		2021		2022			
			Jan.	Apr.	July	Oct.	Jan.	Apr.	July	Oct.	Jan.	Apr.	July	Oct.	Jan.	Apr.	July	Oct.
PHASE 2-A PROJECTS:			Design Phase: Jan. 2016 - Apr. 2016 Approvals & Bidding: Apr. 2016 - Oct. 2016 Construction Phase: Oct. 2016 - Oct. 2018 Note: Program Verification: Oct. 2016 - Oct. 2017 On Hold: Oct. 2016 - Oct. 2021															
MONROE CAMPUS – Part “A”	Marshall	\$26M	Design Phase: Jan. 2016 - Apr. 2016 Approvals & Bidding: Apr. 2016 - Oct. 2016 Construction Phase: Oct. 2016 - Oct. 2018 Note: Program Verification: Oct. 2016 - Oct. 2017 On Hold: Oct. 2016 - Oct. 2021															
GRISSOM SCHOOL 7	Jefferson	\$24.85M	Design Phase: Jan. 2016 - Apr. 2016 Approvals & Bidding: Apr. 2016 - Oct. 2016 Construction Phase: Oct. 2016 - Oct. 2018 Note: Program Verification: Oct. 2016 - Oct. 2017 On Hold: Oct. 2016 - Oct. 2021															
SPENCER SCH. 16 (S.S.B.A.)	F. Thomas	\$34M	Design Phase: Jan. 2016 - Apr. 2016 Approvals & Bidding: Apr. 2016 - Oct. 2016 Construction Phase: Oct. 2016 - Oct. 2018 Note: Program Verification: Oct. 2016 - Oct. 2017 On Hold: Oct. 2016 - Oct. 2021															
EAST CAMPUS/E.P.O.*	Not Required*	\$55M	Design Phase: Jan. 2016 - Apr. 2016 Approvals & Bidding: Apr. 2016 - Oct. 2016 Construction Phase: Oct. 2016 - Oct. 2018 Note: Program Verification: Oct. 2016 - Oct. 2017 On Hold: Oct. 2016 - Oct. 2021															
PHASE 2-B PROJECTS:			Note: Green indicates Early Bid Packages, while A/E completes balance of design (Summer) Note: Sch. 25 Move in 2020 (See School 4 below)															
F. THOMAS (Sch. 25 Relocation)	Not Required	\$4.15M (Make ready)	Design Phase: Jan. 2016 - Apr. 2016 Approvals & Bidding: Apr. 2016 - Oct. 2016 Construction Phase: Oct. 2016 - Oct. 2018 Note: Program Verification: Oct. 2016 - Oct. 2017 On Hold: Oct. 2016 - Oct. 2021															
SCHOOL Without Walls	Not Required	\$9M	Design Phase: Jan. 2016 - Apr. 2016 Approvals & Bidding: Apr. 2016 - Oct. 2016 Construction Phase: Oct. 2016 - Oct. 2018 Note: Program Verification: Oct. 2016 - Oct. 2017 On Hold: Oct. 2016 - Oct. 2021															
SCHOOL 1 (Sch. 15 Relocation) Sch. 1 to be Closed 2017	Sch. 6 (currently)	\$21M	Design Phase: Jan. 2016 - Apr. 2016 Approvals & Bidding: Apr. 2016 - Oct. 2016 Construction Phase: Oct. 2016 - Oct. 2018 Note: Program Verification: Oct. 2016 - Oct. 2017 On Hold: Oct. 2016 - Oct. 2021															
MONROE CAMPUS – Part “B” (a. See Note below)	Marshall	\$28M	Design Phase: Jan. 2016 - Apr. 2016 Approvals & Bidding: Apr. 2016 - Oct. 2016 Construction Phase: Oct. 2016 - Oct. 2018 Note: Program Verification: Oct. 2016 - Oct. 2017 On Hold: Oct. 2016 - Oct. 2021															
EDISON CAMPUS – Part “A”	Not Required (a.)	\$25M (Infrastructure)	Design Phase: Jan. 2016 - Apr. 2016 Approvals & Bidding: Apr. 2016 - Oct. 2016 Construction Phase: Oct. 2016 - Oct. 2018 Note: Program Verification: Oct. 2016 - Oct. 2017 On Hold: Oct. 2016 - Oct. 2021															
PHASE 2-C PROJECTS:			Early Start Staggered Bidding Early Submittals															
SCHOOL 6 (Sch. 22 Relocation)	Franklin (currently)	\$27M	Design Phase: Jan. 2016 - Apr. 2016 Approvals & Bidding: Apr. 2016 - Oct. 2016 Construction Phase: Oct. 2016 - Oct. 2018 Note: Program Verification: Oct. 2016 - Oct. 2017 On Hold: Oct. 2016 - Oct. 2021															
SCHOOL 4 (Pending S.S.B.A.)	D.F.T.L.C. (a.)	\$28M	Design Phase: Jan. 2016 - Apr. 2016 Approvals & Bidding: Apr. 2016 - Oct. 2016 Construction Phase: Oct. 2016 - Oct. 2018 Note: Program Verification: Oct. 2016 - Oct. 2017 On Hold: Oct. 2016 - Oct. 2021															
SCHOOL 2 (Pending SED Final Approval)	Marshall	\$31M	Design Phase: Jan. 2016 - Apr. 2016 Approvals & Bidding: Apr. 2016 - Oct. 2016 Construction Phase: Oct. 2016 - Oct. 2018 Note: Program Verification: Oct. 2016 - Oct. 2017 On Hold: Oct. 2016 - Oct. 2021															
SCH. 10 (S.S.B.A./Re-Design)	Marshall (a.)	\$27M	Design Phase: Jan. 2016 - Apr. 2016 Approvals & Bidding: Apr. 2016 - Oct. 2016 Construction Phase: Oct. 2016 - Oct. 2018 Note: Program Verification: Oct. 2016 - Oct. 2017 On Hold: Oct. 2016 - Oct. 2021															
PHASE 2-D PROJECT:			Strategic Plan Approval: Jan. 2016 - Apr. 2016 Financial Plan Approval: Apr. 2016 - Oct. 2016 Early Submittals Or Mid-Year Move: Oct. 2016 - Oct. 2018															
SCHOOL 30 (Sch. 54 Relocation)	Jefferson (a., alt. D.F.T.L.C or Marshall)	\$23M	Design Phase: Jan. 2016 - Apr. 2016 Approvals & Bidding: Apr. 2016 - Oct. 2016 Construction Phase: Oct. 2016 - Oct. 2018 Note: Program Verification: Oct. 2016 - Oct. 2017 On Hold: Oct. 2016 - Oct. 2021															
District Wide Technology/ Financing Costs/ Capitalized Interest (Applies to all Phases)	Not Applicable	\$72M +/-																
GRAND TOTAL		\$435M																

Note: (a.) due to scheduling the swing space locations have been revised.



Phase II Swing Space Location to Allow Construction

1. Marshall Campus
2. Franklin Campus
3. Jefferson Campus
4. Dag Hammarskjold School 6
5. Dr. Freddie Thomas Learning Center

Appendix C

Table of Phase I Estimated Construction Cost and Anticipated State Aid

This table is updated monthly to track project costs in real time for the duration of the project.

PROGRAM SUMMARY (5/24/17)									
#	ITEMS	PHASE 1A PROJECTS							SUBTOTALS 1A
		DWT-1	17	17 EPC	50-A	58	CHARLOTTE	FRANKLIN	
1	CONSTRUCTION BUDGETS	\$ 5,013,902	\$ 23,491,963	\$ 25,525	\$ 19,137,700	\$ 36,643,148	\$ 23,502,060	\$ 9,215,917	\$ 117,030,212
2	INCIDENTAL BUDGETS	\$ 15,342,150	\$ 4,263,032	\$ -	\$ 3,316,535	\$ 6,215,097	\$ 3,866,197	\$ 1,719,249	\$ 34,722,259
3	CAPITALIZED INTEREST	\$ 1,135,930	\$ 835,811	\$ 115	\$ 902,449	\$ 1,497,848	\$ 1,177,234	\$ 370,242	\$ 5,917,628
4	PHASE 1A PROJECT CONTINGENCY	\$ -	\$ -	\$ -	\$ -	\$ -	\$ 22,231	\$ -	\$ 22,231
6	COMPLETED COST	\$ 21,491,981	\$ 28,588,806	\$ 25,640	\$ 23,356,683	\$ 44,356,091	\$ 28,545,491	\$ 11,305,408	\$ 157,670,100
7	ESTIMATED STATE BUILDING AID	\$ 20,356,052	\$ 19,702,320	\$ 25,128	\$ 18,186,090	\$ 22,509,762	\$ 27,368,257	\$ 10,935,166	\$ 119,082,774
8	ESTIMATED EXCEL FUNDING	\$ 338,101	\$ 6,727,855	\$ -	\$ 2,438,524	\$ 6,206,071	\$ 505,790	\$ 115,784	\$ 16,332,125
9	ESTIMATED TOTAL STATE AID	\$ 20,694,153	\$ 26,430,175	\$ 25,128	\$ 20,624,614	\$ 28,715,833	\$ 27,874,047	\$ 11,050,950	\$ 135,414,899

PHASE 1B PROJECTS							
#	ITEMS	DWT-2	5	28	EAST	EDISON	SUBTOTALS 1B
1	CONSTRUCTION BUDGET	\$ 3,063,587	\$ 17,100,500	\$ 18,565,385	\$ 12,575,269	\$ 21,114,409	\$ 72,419,150
2	INCIDENTAL BUDGET	\$ 13,417,241	\$ 3,214,829	\$ 3,885,334	\$ 5,223,161	\$ 3,811,708	\$ 29,552,272
3	CAPITALIZED INTEREST	\$ 938,934	\$ 1,225,491	\$ 1,369,019	\$ 1,063,586	\$ 1,507,917	\$ 6,104,947
4	PHASE 1B PROJECT CONTINGENCY	\$ (0)	\$ -	\$ -	\$ -	\$ 0	\$ 0
6	COMPLETED COST	\$ 17,419,762	\$ 21,540,820	\$ 23,819,739	\$ 18,862,015	\$ 26,434,033	\$ 108,076,369
7	ESTIMATED TOTAL STATE AID	\$ 16,480,828	\$ 19,794,765	\$ 20,236,558	\$ 17,798,430	\$ 24,926,116	\$ 99,236,697

PHASE 1C PROJECTS						
#	ITEMS	12	MONROE	JEFFERSON	50-B	SUBTOTALS 1C
1	CONSTRUCTION BUDGET	\$ 20,083,696	\$ 24,041,194	\$ 277,469	\$ 2,600,000	\$ 47,002,360
2	INCIDENTAL BUDGET	\$ 3,905,899	\$ 4,218,444	\$ 46,211	\$ 808,286	\$ 8,978,840
3	CAPITALIZED INTEREST	\$ 1,494,503	\$ 1,603,718	\$ 20,159	\$ 52,468	\$ 3,170,828
4	PHASE 1C PROJECT CONTINGENCY	\$ 0	\$ 100,000	\$ -	\$ 400,000	\$ 500,000
	PENDING CHANGES	\$ 118,790	\$ 66,505	\$ -	\$ -	\$ 185,295
6	COST TO COMPLETE	\$ 25,484,098	\$ 29,863,356	\$ 343,819	\$ 3,408,286	\$ 59,099,559
7	ESTIMATED TOTAL STATE AID	\$ 21,485,253	\$ 28,259,638	\$ 323,681	\$ 3,294,786	\$ 53,363,358

ADDITIONAL OWNER'S CONTINGENCY	
PROGRAM LIMIT	\$ 325,000,000
COST TO COMPLETE	\$ 324,846,029
OWNER'S CONTINGENCY	\$ 153,971
UNAIDED OR ABOVE MCA	\$ 36,831,075
TOTAL CONTINGENCY	
	\$ 676,202

Please note:

The amount above MCA does not represent the "local share"

"Local share" is the difference between the annual debt service and the annual state aid

See Table of Debt Service v. Anticipated State Aid Reimbursement

Appendix D

Table of Debt Service and Anticipated State Aid Reimbursement, Phase I

ROCHESTER JOINT SCHOOLS CONSTRUCTION BOARD Facilities Modernization Program [Phase I] COMIDA Series 2012, 2013 and 2015 Financings

Annual Net Debt Service vs. Annual Building Aid

Fiscal Year	Annual Aggregate Net Debt Service (1)	Annual Aggregate Building Aid (2)	DISTRICT SHARE Annual Difference	Sources of Local Share		
				Annual Energy Savings (3)	School District Local Share Funding	Net Annual Difference
2013	0	0	-		0	
2014	5,004,182	6,686,636	1,682,454	6,883	0	1,689,337
2015	15,695,428	16,757,943	1,062,514	153,121	0	1,215,636
2016	19,831,092	16,758,823	(3,072,269)	378,410	2,693,859	0
2017	23,857,946	21,105,845	(2,752,101)	389,762	2,362,338	0
2018	23,873,196	21,105,845	(2,767,351)	401,455	2,365,896	0
2019	23,896,946	21,105,845	(2,791,101)	413,499	2,377,602	0
2020	23,916,946	21,105,845	(2,811,101)	425,904	2,385,197	0
2021	23,936,446	21,105,845	(2,830,601)	438,681	2,391,920	0
2022	23,843,446	21,105,845	(2,737,601)	451,841	2,285,759	0
2023	23,757,446	21,105,845	(2,651,601)	465,397	2,186,204	0
2024	23,770,196	21,105,845	(2,664,351)	479,359	2,184,992	0
2025	23,786,446	21,105,845	(2,680,601)	493,739	2,186,861	0
2026	23,799,696	21,105,845	(2,693,851)	508,552	2,185,299	0
2027	23,813,696	21,105,845	(2,707,851)	523,808	2,184,043	0
2028	26,246,946	21,105,845	(5,141,101)	539,522	4,601,578	0
2029	16,323,500	14,419,209	(1,904,291)	555,708	1,348,583	0
2030	5,123,500	4,347,903	(775,598)	572,379	203,218	0
2031	4,950,750	4,347,022	(603,728)	589,551	14,177	0
2032	0		-	607,237	0	607,237
2033	0		-	625,454	0	625,454
2034	0		-	631,786	0	631,786
2035	0		-	386,990	0	386,990
	0		-		0	0
	355,427,802	316,587,675	(38,840,127)	10,039,041	33,957,527	3,467,104
		316,587,675	38,840,127			

Assumed AMORTIZATION Interest Rates Summary			
	Un-Rounded NIC	Rounded NIC	
Series 2012	0.664802%	0.625%	0.625%
Series 2013	3.387610%	3.375%	3.375%
Series 2015	3.029742%	3.000%	3.000%

(1) Aggregate annual debt service, net of capitalized interest, for Series 2012, 2013 and 2015 bonds. (provided by CitiGroup)

(2) Aggregate building aid for all projects calculated at the actual interest rates summarized above, using estimated final costs provided by RSJCB.

Appendix D

Table of Debt Service and Anticipated State Aid Reimbursement, Phase II

ROCHESTER JOINT SCHOOLS CONSTRUCTION BOARD Facilities Modernization Program [Phase II]

Annual Net Debt Service vs. Annual Building Aid

Fiscal Year	Annual Aggregate Net Debt Service (1)	Annual Aggregate Building Aid (2)	DISTRICT SHARE Annual Difference
2017	0	0	-
2018	4,527,942	4,419,649	(108,293)
2019	26,352,194	25,725,849	(626,345)
2020	35,448,722	34,608,332	(840,390)
2021	35,446,750	34,608,332	(838,418)
2022	37,528,750	36,638,897	(889,853)
2023	37,527,500	36,638,897	(888,603)
2024	37,529,750	36,638,897	(890,853)
2025	37,527,750	36,638,897	(888,853)
2026	37,529,000	36,638,897	(890,103)
2027	37,525,500	36,638,897	(886,603)
2028	37,529,500	36,638,897	(890,603)
2029	37,527,500	36,638,897	(888,603)
2030	37,526,500	36,638,897	(887,603)
2031	37,528,000	36,638,897	(889,103)
2032	37,528,250	36,638,897	(889,353)
2033	32,998,500	32,219,248	(779,252)
2034	11,176,250	10,913,048	(263,202)
2035	2,078,250	2,030,565	(47,685)
2036	2,079,000	2,030,565	(48,435)
	562,915,608	549,583,455	(13,332,153)
	562,915,608	549,583,455	13,332,153

Assumed AMORTIZATION Interest Rates Summary			
	Un-Rounded NIC	Rounded NIC	
Phase II-A	3.622000%	3.625%	
Phase II-B	3.604751%	3.625%	
Phase II-C	3.669789%	3.625%	
Phase II-D	3.768108%	3.750%	

(1) Aggregate annual debt service, including capitalized interest, for Phase II-A, Phase II-B, Phase II-C, and Phase II-D bonds. (provided by CitiGroup)

(2) Aggregate building aid including aid for capitalized interest for all projects calculated at the actual interest rates summarized above, using estimated final costs provided by RSJCB.

(3) The RCSD has approved up to \$18.7 Million in local share contributions to date. This table represents the approved Phase II Financial Plan but is fluid due to NYSED and the RJSCB's Financial Consultants (i.e. Bond Underwriter, Financial Advisor and Counsel).

Appendix E

Table of MBE/WBE/SBE/DBE Subcontractor Firms, Phase I

Contractor	MBE	WBE	SBE	DBE
106 Enterprises			SBE	
5 Star Restoration			SBE	
7Gens (SCMC LLC)	MBE			
ABR Wholesalers		WBE		
Adonis Construction	MBE			
Akwasne Construction	MBE		SBE	DBE
A-M Electrical, Inc.	MBE			
American Janitor Service			SBE	
AP Safety and Security Corp.		WBE		
Apex Enterprises LLC	MBE			
Architectura PC		WBE	SBE	
ArchStetics Architecture			SBE	
ASA Contractors			SBE	
Atlantic Glass	MBE			
Beaver Creek Industries			SBE	
Bethany Technologies		WBE		
Bolton Surveying			SBE	
Brooks Brothers Painting of Rochester Inc.	MBE			
BSV Enterprises	MBE			DBE
Building Energy Solutions		WBE		
CanAm Environmental Safety, Inc.			SBE	
Cannon & Noto Enterprise	MBE		SBE	
Cannon Electric	MBE			
Cardwell Construction			SBE	
Carney Electrical & Industrial Supplies, LLC	MBE			
Casarsa Construction Supply			SBE	
Chait Studios			SBE	
CHC Construction	MBE			
Chenango Contracting, Inc.	MBE			
CID Coatings			SBE	
City Electric Company Inc.		WBE		DBE
Clark Moving & Storage		WBE		
Coldwater Insulation		WBE	SBE	

Compliance & Administrative Services of NY	MBE	WBE		
Comprehensive Employee Management	MBE			
Construction Cost Services, Inc.	MBE			
Convergent Technologies		WBE		
Cooper Sign Company	MBE			
Cornerstone Training Institute			SBE	
Crosby Brownlee		WBE		
Cummings Construction	MBE			
Dataflow Reprographics, Inc.		WBE		
DDT Construction			SBE	
Deborah Jean		WBE		
Decca Paving	MBE			DBE
DeClerck Flooring Inc.			SBE	
Design Services, Inc.				DBE
Downey-Goodlein Elevator Corp.		WBE		
Dwyer Architectural		WBE		
Edge-Global Technology Solutions			SBE	
English Trucking	MBE			
Environmental Design & Research P.C.		WBE		
Existing Conditions Surveys		WBE		
Firestop Technologies			SBE	
Fisher Associates		WBE		
Flower City Monitors Service	MBE			
Foundation Design			SBE	
Foxwise USA	MBE			
G & J Contracting	MBE			DBE
Garden Grove			SBE	
Genesee Restoration		WBE		
Gholkar's Incorporated	MBE			
Grayco Corp			SBE	
Gym Equipment & Specialties. of NY Inc.			SBE	
Heather Demoras Design		WBE		
Herline Technologies		WBE		
Herman HVAC Products			SBE	
Home Guard Enviromental	MBE			
I.C. Construction Services	MBE			
Indoor Air Technologies		WBE		
Indoor Environmental Air Specialists			SBE	

Installrite Systems			SBE	
Interior Movers			SBE	
Interior Moving Service			SBE	
Invictus Electrical, LLC			SBE	
J&N Computer Services, Inc.		WBE		
Jackson Welding		WBE		
Jaclyn Building Services			SBE	
Jai II, Inc.	MBE			
JC Insulation			SBE	
JC Smith		WBE		DBE
Jemco Water Treatment			SBE	
Jensen / BRV Engineering			SBE	
JHP Industrial Supply Co.	MBE			DBE
Jim White Metal Product			SBE	
John N Sanchez Corporation	MBE			
Journee Construction	MBE		SBE	DBE
Journee Construction - Demo				DBE
Journee Construction-Cut/Patch			SBE	
Journee Construction-Insulation	MBE			
Journee Tech Staffing				DBE
Joy Kuebler Landscape Architect		WBE		
Kenel J Antoine Architect & Associates	MBE			
Killian Inc.		WBE		DBE
Klug Crane & Rigging			SBE	
Kraftwerks		WBE		
Krieg Construction		WBE		
Kris Kimmel Drafting			SBE	
Lakeview Construction			SBE	
Larsen Engineering	MBE			
LDK Engineering		WBE		
Lighthouse Energy, LLC.		WBE		
Lysander Construction, LLC		WBE		
M.A. Architects			SBE	
M.H. General Contracting	MBE			
Mark Cerrone Inc.		WBE		
Martens Janitorial			SBE	
Massive Testing & Balancing			SBE	
MD Office Works	MBE			

ME Holvey Consulting, LLC.			SBE	
Mechanical Testing Inc.		WBE		
Merkel Donohue/FM Office Express	MBE			
MGM Insulation	MBE			
Mid-City Signs		WBE		
Millennium Strategies			SBE	
Minority Material Haulers		WBE	SBE	
MJ Dreher Trucking Inc.		WBE		DBE
MS Unlimited		WBE		DBE
NAIRY Mechanical			SBE	
Nickerson Corporation		WBE		
NPV, Inc.		WBE		
OCM Construction	MBE			DBE
OSO, Inc.	MBE	WBE		DBE
Pathfinder Engineers And Architects		WBE		
Pavilion Drainage	MBE			
PDS Construction		WBE	SBE	
Pipitone Enterprises LLC		WBE		
Popli Design Group	MBE			DBE
Precision Concrete & Masonry Inc.			SBE	
ProCarpet		WBE		
Ram-Tech Engineers	MBE			
RAVI Engineering	MBE			DBE
Razak Associates	MBE			
Redhawk Equipment			SBE	
Re-Entry Data		WBE		
Riccelli Enterprises		WBE		
Roche & Co			SBE	
Rochester Rigging & Erectors				DBE
Rogers Enterprises	MBE		SBE	DBE
Roth Consulting		WBE		
S&W Contracting	MBE	WBE		
Safety Zone Environmental		WBE	SBE	
Safety Zone Ventures				DBE
Savin Engineers	MBE			
Scott Construction	MBE		SBE	
Scott's Unlimited	MBE		SBE	
Shades of Color	MBE	WBE		

Sheen and Shine				DBE
Sienna Envir. Tech		WBE		DBE
Sigma PSI			SBE	
Singleton Construction	MBE			
SLR Contracting & Service Company	MBE			DBE
Spectrum Windows & Walls		WBE		
Spencer Virnoche/Upstate Interiors	MBE			
Steel Tech Fabricator Inc.	MBE			
Steve General Contractors	MBE			
Structural Remediation Services Inc.		WBE	SBE	DBE
Superior Insulation/Williamstown Construction			SBE	
Supreme Quality Painting	MBE			
Susquehanna Sheet Metal Erection Service Inc.		WBE	SBE	
Syracuse Scenery & Stage Lighting Co., Inc.		WBE		
Syrstone		WBE		
Tasteful Connections, Inc.		WBE		
Toscano Clements Taylor		WBE		
Unified Electric	MBE		SBE	
Upstate Interiors	MBE			DBE
Upstate Specialty Coatings, LLC			SBE	
US Ceiling	MBE	WBE		DBE
Uzo 1 International, Ltd.	MBE		SBE	DBE
Vargas Associates		WBE		DBE
Watts Architecture & Engineering	MBE			DBE
Wayside Contractors		WBE		
We're Forms		WBE		
Weydman Electric		WBE		
Williams Doors & Hardware		WBE		
WYCO Mechanical, LLC		WBE		

Table of MBE/WBE/SBE/DBE Subcontractor Firms, Phase II

Contractor Name	MBE	WBE	SBE	DBE
A La Renee Marketing, Inc.			SBE	
ADONIS CONSTRUCTION LLC	MBE			
ALPCO Recycling, Inc.			SBE	
Ampie Enterprises Inc		WBE		
AP Safety and Security Corp.		WBE		
ArchWood, Inc		WBE		
ARMOR FENCE COMPANY OF WNY INC				DBE
Arrow Sheet Metal Works Inc.				DBE
Art Hill Excavating Inc.		WBE		
BEDROCK CONSTRUCTION ENTERPRISES INC	MBE			
Bethany Technologies Company LLC		WBE		
Bill's Topsoil Sand & Gravel, LLC	MBE			
Building Energy Solutions LLC		WBE		
Burgio and Campofelice Inc.		WBE		
C&A Pavement Markings		WBE		
Can-Am Consultants Inc			SBE	
Cannon & Noto Enterprise Inc	MBE			
Cannon Electric	MBE			
Casarsa Construction Supply Incorporated		WBE		
Charo Cleaning Inc.			SBE	
Chemtech Consulting Group, Inc.				DBE
City Electric Company, Inc		WBE		
Coldwater Insulation, Inc.		WBE		
Compliance & Administrative Services of New York		WBE		
Construction Services by Ken	MBE			
CROSBY-BROWNLIE INC		WBE		
Cummings Construction LLC	MBE			
CVF INC				DBE
CW Piping LLC	MBE			
Dataflow Reprographics LLC		WBE		
DECCA PAVING, INC.	MBE			
Diversified Industries of WNY, LTD.			SBE	
E Plumbing & Piping, Inc.		WBE	SBE	
Edge GTS		WBE		DBE
Empire State Mechanical Contractors, Inc.		WBE		

Environmental Design & Research, Landscape Architecture, Engineering & Environmental Services, D.P.C		WBE	SBE	
Finger Lakes Service Group, Inc		WBE		
FIRESTOP TECHNOLOGIES INC		WBE		
Flood And Flood Photography And Videography LLC	MBE			
Flower City Monitoring Services, LTD.	MBE	WBE		
Frank Springer Interiors			SBE	
G & J Contracting, Inc.				DBE
G.P. Land & Carpet Corp.		WBE		
Garden Grove			SBE	
GENESEE BUILDING RESTORATION INC		WBE		
Gilligan Electric Corp.		WBE		
GM Mechanical	MBE			
Health & Safety Resources, LLC			SBE	
Heaster Building Restoration, Inc.				DBE
Heather Demoras Design		WBE		
Herb Boyce Grading Co.			SBE	
Herline Technologies		WBE		
Hojack Park LLC			SBE	
Home Guard Environmental Services Inc	MBE			
Huber Electric Inc		WBE		
IC Construction Services	MBE			
Invictus Electrical		WBE		
Iroquois Bar Corp.	MBE			
Jennings Construction Services LLC	MBE			
JHP Industrial Supply Co Inc				DBE
Keating Consulting		WBE		
Kenel J Antoine Architect & Associates	MBE			
KHEOPS Architecture, Engineering & Survey, D.P.C.				DBE
Kris B. Kimmel Construction Drafting, Inc.			SBE	
Lakeview Construction			SBE	
Land NPR Productions			SBE	
Lozier Environmental Consulting		WBE		
Mark Cerrone Inc		WBE		
Marques & Associates Land Surveyors And Engineer P C	MBE			
Marten's Janitorial			SBE	
McClain Associates Inc.		WBE	SBE	
MGM Insulation Inc	MBE			DBE
Millennium Strategies			SBE	

MS Unlimited Inc.				DBE
Newfane GC			SBE	
NorthCoast Electrical Solutions			SBE	
NPV Inc.		WBE	SBE	
OCM Construction, Inc.				DBE
Oneida Sales & Services, Inc.	MBE			
OSO, Inc		WBE		
P D S CONSTRUCTION		WBE		
Panther Graphics, Inc.				DBE
Popli Architecture & Engineering LSPC	MBE			
Precision Concrete & Masonry, Inc..	MBE			
Ramar Steel Sales Inc.				DBE
Ravi Engineering & Land Surveying, PC	MBE			
Razak Associates Architecture Engineering & Land Surveying, PLLC	MBE			
Renewal Property Maintenance Services, LLC		WBE		
Riccelli Trucking Inc		WBE		
Right Price Companies Inc		WBE		
Rodriguez Construction Group	MBE			
Roger's Enterprises	MBE		SBE	DBE
Runyon Lightning Protection & Restoration			SBE	
S.E.G. Construction Inc.		WBE		
Safety Zone Ventures, LLC			SBE	DBE
Samson Fuel		WBE		
Sanitary Solutions		WBE	SBE	
Savin Engineers PC	MBE			
Scott Construction of Rochester Inc.			SBE	
Shades of Color, Inc.	MBE			
Sienna Environmental Technologies LLC	MBE			
Singleton Consultants		WBE		
STEEL TECH FABRICATOR INC	MBE			
Steve General Contractors	MBE			
Susan M Anacker Professional Land Surveyor, PLLC		WBE		
Syracuse Scenery & Stage Lighting Co. Inc.		WBE		
Tasteful Connections Inc		WBE		
Unified Electric	MBE		SBE	
United Mechanical		WBE		
Upstate Specialty Coatings			SBE	
UPSTATE STEEL INC		WBE		DBE

US Ceiling Corp	MBE			
Vargas Associates		WBE		
W.R. Revels Company	MBE			
WYCO Mechanical LLC		WBE		
Ziske-Kraftwerks Inc		WBE		